

APRIL 11, 2021



JAZZ
SUNDAY

JOHN 20:19-29



FIRST LUTHERAN CHURCH

INSPIRE. EQUIP. REACH.

WELCOME! If you believe Jesus is the risen Son of God, or if you are here to explore the mysteries of faith... **WELCOME.** We are just glad you are here.

Please make yourself at home and let us know if there is anything you need. This bulletin will help you navigate worship at First Lutheran and opportunities to serve and connect with our faith community.



WHAT ARE WE ABOUT?

We want to make Jesus famous.

It is as simple as that. Our purpose in gathering here today is to make Jesus known and to know him better. Because if this isn't about Jesus, it isn't worth doing.



COMMUNION The sacrament of Communion is celebrated at all services the first and third Sundays and Wednesdays of each month. All are welcome to participate in this act of worship and remembrance. Children

who do not receive communion are welcome to come forward for a blessing.

WORSHIP We believe that all instruments, all voices and all people should praise the Lord. We do not worship a "style," we worship Jesus.



Traditional Worship follows a liturgy and the music centers around the organ and piano. The order of worship is inserted into the bulletin.

9 a.m. Sundays; 1:30 p.m. Wednesdays in the Sanctuary on the north end of the church



CONNECTING We would love to get to know you better. Peruse our website for ways to connect through service, study, or community-building events. Fill out the blue post-it so we can keep in touch.



Celebration Worship uses a praise band and the order of worship and song lyrics are projected on the wall.

9 & 10:30 a.m. Sundays in the Celebration Center on the west end of the church



OFFERING We give tithes and offerings as an act of worship, obedience, and thanksgiving. If you are a guest, you are not expected or obligated to give.



BELONGING Each quarter, we host a new member BELONG class to introduce and welcome new members to First Lutheran. The next class will be held Sunday, May 23. Contact the church office for details.

The mission of First Lutheran Church is to bring people into a relationship with Jesus Christ and to help them grow in the Christian faith.

April 11, 2021: Second Sunday of Easter

WORSHIP PARTICIPANTS

Message	Pastor Laurie Neill
Assisting Pastor	Pastor Marty Tollefson
Dixieland Jazz Group Conductor	David Ferreira

PRELUDE:

Selections from the Dixieland Jazz Group

WELCOME & PRAYER OF INVOCATION

CONFESSION & FORGIVENESS: *(please stand as you are able)*

P: Alleluia! Christ is Risen!

C: He is risen indeed! Alleluia!

P: Blessed be the holy Trinity, one God, who gives us a new birth into a living hope, who raises us with Christ from death, who fills us with the Holy Spirit.

C: Amen.

P: Let us repent of our sin, and claim the promise of God.

Silence for reflection

P: Living God,

C: We confess before you and one another our wrongful ways, our pursuit of perishable things, our own part in crucifying our Lord, Jesus Christ. Forgive us, O God; renew the face of the earth; and give us the assurance that you have rescued us from the power of sin, and have made us alive in the Spirit forever. Amen.

P: Christ suffered once and for all, in order to bring us back to God. In the name of the risen Lord Jesus Christ, I proclaim to you that your sins are forgiven. Lay aside guilt, put away shame, for you are chosen and precious in God's sight. Live in the marvelous light of Christ.

C: Amen.

OPENING SONG: *Amazing Grace, How Sweet the Sound*



1 A - maz - ing grace!— how sweet the sound— that
2 'Twas grace that taught my heart to fear, and
3 Through man - y dan - gers, toils, and snares I
4 The Lord has prom - ised good to me; his
5 When we've been there ten thou - sand years, bright



saved a wretch like me! I once was lost, but
grace my fears re - lieved; how pre - cious did that
have al - read - y come; 'tis grace has brought me
word my hope se - cures; he will my shield and
shin - ing as the sun, we've no less days to



now am found; was blind, but now I see.
grace ap - pear the hour I first be - lieved!
safe thus far, and grace will lead me home.
por - tion be as long as life en - dures.
sing God's praise than when we'd first be - gun.

(please be seated)

GREETING:

P: The grace of our Lord Jesus Christ, the love of God,
and the communion of the Holy Spirit be with you all.

C: And also with you.

PRAYER OF THE DAY:

P: Alleluia! Christ is risen!

C: He is risen indeed! Alleluia!

P: Let us pray. O God of life, you reach out to us amid our fears
with the wounded hands of your risen Son.

C: By your Spirit's breath revive our faith in your mercy, and strengthen us to be the body of your Son, Jesus Christ, our Savior and Lord, who lives and reigns with you and the Holy Spirit, one God, now and forever. Amen.

SONG: *Leaning on the Everlasting Arms*



1 What a fel - low-ship, what a joy di - vine, lean - ing on the ev - er -
 2 Oh, how sweet to walk in this pil - grim way, lean - ing on the ev - er -
 3 What have I to dread, what have I to fear, lean - ing on the ev - er -



last - ing arms; what a bless - ed - ness, what a peace is mine,
 last - ing arms; oh, how bright the path grows from day to day,
 last - ing arms? I have bless - ed peace with my Lord so near,

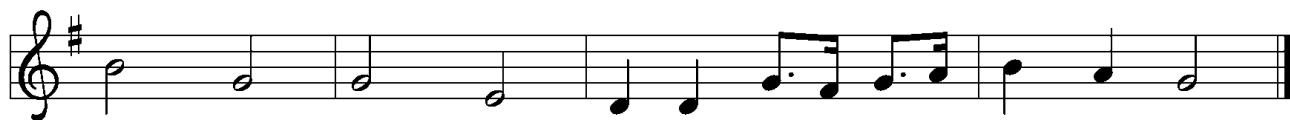


lean - ing on the ev - er - last - ing arms.
 lean - ing on the ev - er - last - ing arms.
 lean - ing on the ev - er - last - ing arms.

Refrain



Lean - ing, lean - ing, safe and se - cure from all a - larms;



lean - ing, lean - ing, lean - ing on the ev - er - last - ing arms.

NEW TESTAMENT READING: *1 John 1:1-2:2*

SONG: *Jesus Loves Me*

1 Je - sus loves me! this I know, for the Bi - ble tells me so;
2 Je - sus loves me! he who died heav - en's gates to o - pen wide;
3 Je - sus loves me! he will stay close be - side me all the way;

lit - tle ones to him be - long, they are weak, but he is strong.
he will wash a - way my sin, let his lit - tle child come in.
when at last I come to die, he will take me home on high.

Refrain

Yes, Je - sus loves me, yes, Je - sus loves me,

yes, Je - sus loves me, the Bi - ble tells me so.

(please stand as you are able)

GOSPEL ACCLAMATION:

P: The Holy Gospel according to John, the 20th chapter. (*John 20:19-29*)

C: **Glory to you, O Lord.**

When it was evening on that day, the first day of the week, and the doors of the house where the disciples had met were locked for fear of the Jews, Jesus came and stood among them and said, "Peace be with you." After he said this, he showed them his hands and his side. Then the disciples rejoiced when they saw the Lord. Jesus said to them again, "Peace be with you. As the Father has sent me, so I send you." When he had said this, he breathed on them and said to them, "Receive the Holy Spirit. If you forgive the sins of any, they are forgiven them; if you retain the sins of any, they are retained."

But Thomas (who was called the Twin), one of the twelve, was not with them when Jesus came. So the other disciples told him, "We have seen the Lord." But he said to them, "Unless I see the mark of the nails in his hands, and put my finger in the mark of the nails and my hand in his side, I will not believe."

A week later his disciples were again in the house, and Thomas was with them. Although the doors were shut, Jesus came and stood among them and said, "Peace be with you." Then he said to Thomas, "Put your finger here and see my hands. Reach out your hand and put it in my side. Do not doubt but believe." Thomas answered him, "My Lord and my God!" Jesus said to him, "Have you believed because you have seen me? Blessed are those who have not seen and yet have come to believe."

P: The Gospel of our Lord.

C: **Praise to you, O Christ**

(please be seated)

MESSAGE: Pastor Laurie Neill

*Order of worship printed from Sundays and Seasons.com. Copyright 2015 Augsburg Fortress
All rights reserved. Reprinted by permission under Augsburg Fortress Liturgies Annual License # 13275-L
Music Reprinted under OneLicense.net #721505*

SONG: *What a Friend We Have in Jesus*



- 1 What a friend we have in Je - sus, all our sins and griefs to bear!
- 2 Have we tri - als and temp - ta - tions? Is there trou - ble an - y - where?
- 3 Are we weak and heav - y - lad - en, cum - bered with a load of care?



What a priv - i - lege to car - ry ev - 'ry - thing to God in prayer!
We should nev - er be dis - cour - aged—take it to the Lord in prayer.
Pre - cious Sav - ior, still our ref - uge—take it to the Lord in prayer.



Oh, what peace we of - ten for - feit; oh, what need - less pain we bear—
Can we find a friend so faith - ful who will all our sor - row share?
Do your friends de - spise, for - sake you? Take it to the Lord in prayer.



all be - cause we do not car - ry ev - 'ry - thing to God in prayer!
Je - sus knows our ev - 'ry weak - ness—take it to the Lord in prayer.
In his arms he'll take and shield you; you will find a so - lace there.

APOSTLES' CREED: *(please stand as you are able)*

**I believe in God, the Father almighty,
creator of heaven and earth.**

I believe in Jesus Christ, his only Son, our Lord.

He was conceived by the power of the Holy Spirit, and born of the virgin Mary.

He suffered under Pontius Pilate, was crucified, died, and was buried.

He descended into hell. On the third day he rose again.

He ascended into heaven, and is seated at the right hand of the Father.

He will come again to judge the living and the dead.

**I believe in the Holy Spirit, the holy catholic Church,
the communion of saints, the forgiveness of sins,
the resurrection of the body, and the life everlasting. Amen.**




(please be seated)

OFFERING:

OFFERING OPTIONS

Thank you for your new or continued generosity towards God's mission at First Lutheran Church. In-person offerings may be dropped in the offering baskets at the entry/exit. Offerings can also be mailed to the church office and we encourage you to use our online giving and texting options.

Online Giving is an easy and convenient way to "set it and forget it."

-  **ONLINE GIVING:** www.flcfargo.org (from the Quick Links banner select "Donate Now")
-  **TEXT TO GIVE:** Text 701.354.1495 with the dollar amount you would like to give
-  **MAIL A CHECK:** 619 Broadway, Fargo, ND 58102

SONG:

Pennies from Heaven (instrumental)
Dixieland Jazz Group

PRAYERS FOR GOD'S PEOPLE

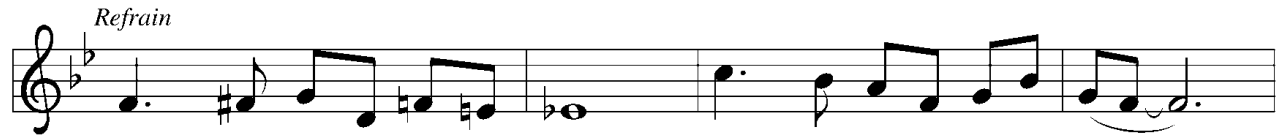
THE LORD'S PRAYER:

**Our Father, who art in heaven, hallowed be thy name,
thy kingdom come, thy will be done, on earth as it is in heaven.
Give us this day our daily bread; and forgive us our trespasses, as we forgive those who
trespass against us.
Lead us not into temptation, but deliver us from evil.
For thine is the kingdom, and the power, and the glory, forever. Amen.**

(please stand as you are able)

BENEDICTION & THREEFOLD AMEN

CLOSING SONG: *Just a Closer Walk with Thee*



Just a clos-er walk with thee, grant it, Je-sus, is my plea;



dai - ly walk-ing close to thee, let it be, dear Lord, let it be.



- 1 I am weak but thou art strong: Je - sus, keep me from all wrong;
- 2 Through this world of toil and snares, if I fal - ter, Lord, who cares?
- 3 When my fee - ble life is o'er, time for me will be no more;



I'll be sat - is - fied as long as I walk, let me walk close to thee.
Who with me my bur - den shares? None but thee, dear Lord, none but thee.
guide me gent - ly, safe - ly o'er to thy king - dom shore, to thy shore.

SENDING:

- P: Alleluia! Go in peace, share the good news!
- C: Thanks be to God! Alleluia!

POSTLUDE:

When the Saints Go Marching In
Dixieland Jazz Group

THANK YOU to today's jazz musicians:

Jeremy Brekke - trumpet; David Ferreira - piano
Jim Knutson - drums; Gene Okerlund - trombone
Doug Neill - tuba; Matt Patnode - clarinet and soprano saxophone



**FIRST
LUTHERAN
CHURCH**

Calling All Closet Cleaners and Miracle Makers...

This spring,

First Lutheran is partnering with Lutheran World Relief to make baby care kits to provide the basics to families in need. We invite you to participate!

Visit lwr.org/babycarekits for more information on kit items and instructions for making cloth diapers from flannel or cotton t-shirts.

Donations can be dropped off at the church Welcome Desk now through Mother's Day, Sunday, May 9.

Kit items include

- » Lightweight cotton t-shirts (no onesies)
- » Long or short-sleeved gowns or sleepers (without feet)
- » Receiving blankets; cloth diapers (flat fold preferred)
- » Jackets, sweaters, or sweatshirts with a hood
- » Socks
- » Hand towels (dark color recommended)
- » Bath-size bars of gentle soap
- » Diaper pins
- » Gently-used cloth diapers

Questions? Contact Pr. Stephanie Tollefson,
stollefson@flcfargo.org, or 701.235.7389.

NEWS & EVENTS

Visit our website for more detailed information and to register, flcfargo.org.

GRIEF SUPPORT AND SMALL GROUP RESOURCES

Two of our community ministry partners, Hospice of the Red River Valley and Living Free/Jail Chaplains, are offering online small groups to help deal with many types of personal loss. Several groups are beginning in the following weeks. We invite you to visit their websites to learn more and to register.

- Hospice of the Red River Valley, hrrv.org, various community grief support classes and programs.
- Living Free/Jail Chaplains, jailchaplains.com, small groups on facing fear, anxiety, worry; and anger management.

Contact Polly Kloster, pkloster@flcfargo.org, or 701.235.7389 with any questions.

FAMILY LIFE FAITH MILESTONE

Confirmation (make-up from October 2020 postponement)

- Today, Sunday, April 11, 1 p.m., Celebration Center

Please pray for and celebrate our confirmands!

The service begins at 1 p.m. Confirmands and immediate family should arrive at 12:30 p.m. An individual confirmation photo will be taken. Recommended attire is business casual (robes will not be worn). Live-streaming will be offered on flcfargo.org for extended family, friends and everyone to watch the confirmation service.

CHURCH OFFICE: 701.235.7389, info@flcfargo.org

OFFICE HOURS / WELCOME DESK:

MON, TUES, WEDS, THURS 8 a.m.—5 p.m.

FRI: 8 a.m.—12 p.m.

SUN 8:30 a.m.—12 p.m.

Wi-Fi: FLCGuest, password: FirstLutheran619

CELEBRATE PRAYER

We as God's people believe in the power of prayer. Please pray for the following who have asked to be prayed for publicly: *Brenda Cummins, Gail Zimprich, Janice Ames, Pam Burley, Dan and Janna Westerholm, Marilyn Parker, Betty Wilson, Liz Gibb, Roger Hansen, Marlene Young, Wes Briggs, Shawn Orvedal, Doug Aseby, Wayne Lebeda, Barb Orvedal, Charlotte Nielson, and Linda Merkens.*

The sympathy and prayers of First Lutheran are offered to the family and friends of **Amy Carey**, wife of Don Carey; mother of Becky LaMont and Kathleen Schell.

CHRISTIAN EDUCATION

Kids are an important part of FLC! In-person classes will resume in Fall 2021. Online classes and at-home resources will continue through the school year.

Nursery (0-5 yrs): Closed until further notice (COVID precaution)

Kids at First (age 3-4th grade): at-home FLOCK Magazine and FLOCK online resources

56ers (5-6th grade): Wednesdays, 6 p.m., online Zoom

Servant Leadership Academy/Confirmation

(7-8th grade): Wednesdays, 7 p.m., online Zoom

Youth Group (9-12th grade): Wednesdays, 8 p.m., Great Hall

YOUR MINISTRY TEAM

Pr. Corey Bjertness	cbjertness@flcfargo.org
Pr. Laurie Neill	lneill@flcfargo.org
Pr. Stephanie Tollefson	stollefson@flcfargo.org
Pr. Marty Tollefson	mtollefson@flcfargo.org
Rollie Johnson	rjohnson@flcfargo.org
Shelly Erickson	serickson@flcfargo.org
Erik Carlson	ecarlson@flcfargo.org
Marlee Robertson	mrobertson@flcfargo.org
Polly Kloster	pkloster@flcfargo.org

View the entire staff online at flcfargo.org

Council Officers:

Sindy Keller, President	701.238.2088
Gary Haugo, Vice President	701.261.5172
Tracy Farmer, Treasurer	701.356.0324
Chris Kraemer, Secretary	701.371.5718
Gary Inman, Past Chair	701.371.1563

THIS WEEK

Sunday, April 11

- 9 a.m. Traditional Worship, Sanctuary
- 9 a.m. Contemporary Worship, Celebration Center
- 10 a.m. Coffee Fellowship, Great Hall
- 10:15 a.m. Nominating Committee Meeting, Luther Room
- 10:30 a.m. Contemporary Worship, Celebration Center
- 12:30 p.m. Open Doors For All Nations Worship, CrossTalk Café
- 1 p.m. Confirmation Service, Celebration Center

Monday, April 12

- 9 a.m. Quilters Ministry Meeting, Fellowship Hall
- 1 p.m. Staff Meeting, Adult Ed Room
- 3 p.m. Dakota Brass Rehearsal, Great Hall

Tuesday, April 13

- 7 a.m. Men's Bible Study, Fellowship Hall
- 8 a.m. Helping Hands, Great Hall
- 9 a.m. MomTalk Steering Meeting, Great Hall
- 1 p.m. Knit and Crochet Group, Bethany on 42nd
- 6 p.m. Tae Kwon Do, Gym

Wednesday, April 14

- 12:45 p.m. Organ Recital by Michael Olson, Sanctuary
- 1:30 p.m. Wednesday Fellowship, Sanctuary/Great Hall
- 6 p.m. 56ers, online Zoom
- 7 p.m. SLA/Confirmation, online Zoom
- 8 p.m. Youth Group, Great Hall

Thursday, April 15

- 12 p.m. Foundation Board Meeting, Adult Ed Room

Friday, April 16

- 12 p.m. Church/Church Office Closed

Saturday, April 17

- 11 a.m. Memorial Service for Rod Capistran, Sanctuary/Great Hall

Sunday, April 18 - Communion Sunday

- 9 a.m. Traditional Worship, Sanctuary
- 9 a.m. Contemporary Worship, Celebration Center
- 10 a.m. Coffee Fellowship, Great Hall
- 10:30 a.m. Contemporary Worship, Celebration Center
- 12:30 p.m. Open Doors For All Nations Worship, CrossTalk Café

BAPTISM

Today we celebrate the baptism of **Aubrey Remer**, daughter of Morgan and Joshua Remer.

FLOWERS

The altar flowers today are given in honor of **Joyce Johnson's** 90th birthday (April 7), from her family. The flowers on the organ are given in memory of **Alex Stoffel**, from his daughter Kathy Ferreira .

BUS SERVICE TO FLC

This past year, our contracted bus service providing transportation to worship on Sunday morning and Wednesday afternoon was discontinued for COVID safety precautions. We are happy to be able to provide bus service again to those needing transportation to attend worship.

- Contact Becki Tollefson, btollefson@flcfargo.org or 701.235.7389 to be added to the bus pick-up schedule.
- Our contracted carrier is not able to cover the entire Fargo-Moorhead area. The covered address zone is primarily focused in north Fargo. Contact Becki to discuss availability/options.
- The bus does not have a wheelchair lift. Riders must be able to navigate a few stairs to board/exit the bus.

SUPPORT FLC MINISTRIES

- **Online Giving:** flcfargo.org (from the Quick Links banner, select "Donate Now")
- **Text to Give:** Text 701.354.1495 with the dollar amount you would like to give
- **Mail a Check:** 619 Broadway N, Fargo, ND 58102

BROADCAST SCHEDULE

- **Online:** Sundays 9 & 10:30 a.m., flcfargo.org and Facebook.
- **Radio:** Sundays 9 a.m., 970AM and 93.1FM.
- **TV:** Fargo: Sundays 1:30 p.m., Tuesdays 6:30 p.m. (channels Midco 68, Sparklight 1068); Moorhead: Sundays 5 p.m., Tuesdays 7 p.m. (channels Midco 99, Sparklight 69).