

SEPT. 6, 2020



FOR WHERE TWO OR THREE
ARE GATHERED IN MY NAME,
I AM THERE AMONG THEM.

MATT. 18:15-20



619 BROADWAY, FARGO ND | 701.235.7389 | WWW.FLCFARGO.ORG |

FIRST LUTHERAN CHURCH

INSPIRE. EQUIP. REACH.

WELCOME! If your life has been blessed or if you are looking to be blessed...
WELCOME. We are just glad you are here.

Please make yourself at home and let us know if there is anything you need. This bulletin will help you navigate worship at First Lutheran and opportunities to serve and connect with our faith community.



WHAT ARE WE ABOUT?

We want to make Jesus famous. It is as simple as that. Our purpose in gathering here today is to make Jesus known and to know him better. Because if this isn't about Jesus, it isn't worth doing.



COMMUNION The sacrament of Communion is celebrated the first and third Sundays and Wednesdays of each month at all services. All are welcome to participate in this act of worship and remembrance. Children

who do not receive communion are welcome to come forward for a blessing.

WORSHIP We believe that all instruments, all voices and all people should praise the Lord. We do not worship a "style," we worship Jesus.



Traditional Worship follows a liturgy and the music centers around the organ and piano. The order of worship is inserted into the bulletin. [9 a.m. Sundays in the Sanctuary on the north end of the church; 1:30 p.m. Wednesdays in the Sanctuary]



Celebration Worship uses a praise band and the order of worship and song lyrics are projected on the wall. [9 & 10:30 a.m. Sundays and 6 p.m. Wednesdays in the New Celebration Center on the west end of the church]



CONNECTING We would love to get to know you better. Peruse our website for ways to connect through service, study, or community-building events.



OFFERING We give tithes and offerings as an act of worship, obedience, and thanksgiving. *If you are a guest, you are not expected or obligated to give.*

Please join us in The Great Hall 10-11 a.m. on Sundays for coffee, cookies, and conversation.



BELONGING If you would like to call FLC your church home, come to our "Belong" class. Contact Marty Tollefson at mtollefson@flcfargo or 701.235.7389 for more information. Our next Belong class will be held October 8.

September 6, 2020

WORSHIP PARTICIPANTS

Message	Pr. Corey Bjertness
Music Minister	Michael Olson
Cantor	David Ferreira

PRELUDE

Variations on Thaxted — Tom Trenney
Michael Olson, organist

WELCOME and ANNOUNCEMENTS

PRAYER OF INVOCATION

CONFESSION & FORGIVENESS *(please stand as you are able)*

P: In the name of the Father, and of the † Son, and of the Holy Spirit.

C: Amen.

P: God of all mercy and consolation, come to the help of your people, turning us from our sin to live for you alone. Give us the power of your Holy Spirit that we may confess our sin, receive your forgiveness, and grow into the fullness of Jesus Christ, our Savior and Lord.

C: Amen.

P: Seeking reconciliation with God and neighbor,
let us remember the gift of baptism and confess our sin.

Silence for reflection

P: God of mercy,

C: we confess that we have sinned against you, against one another, and against the earth entrusted to our care. We are worried and distracted by many things, and we fail to love you above all else. We store up treasures for ourselves and turn away from our neighbors in need. Forgive us, that we may live in the freedom of your Son, Jesus Christ our Lord. Amen.

P: When we were laid low by sin and guilt, God made us alive together with Christ, forgiving us † all our trespasses by taking our sins to the cross.
For freedom Christ has set us free: Rejoice in this good news!

C: Amen.

OPENING HYMN

All People That On Earth Do Dwell

1 All peo - ple that on earth do dwell, sing to the
 2 Know that the Lord is God in - deed; with - out our
 3 Oh, en - ter then his gates with praise; ap - proach with
 4 For why? The Lord our God is good: his mer - cy
 5 To Fa - ther, Son, and Ho - ly Ghost, the God whom

Lord with cheer - ful voice; him serve with mirth, his
 aid he did us make. We are his folk, he
 joy his courts un - to; praise, laud, and bless his
 is for - ev - er sure; his truth at all times
 heav'n and earth a - dore, from us and from the

praise forth tell; come ye be - fore him and re - joice.
 doth us feed, and for his sheep he doth us take.
 name al - ways, for it is seem - ly so to do.
 firm - ly stood, and shall from age to age en - dure.
 an - gel host be praise and glo - ry ev - er - more.

(please be seated)

GREETING

P: The grace of our Lord Jesus Christ, the love of God,
and the communion of the Holy Spirit be with you all.

C: **And also with you.**

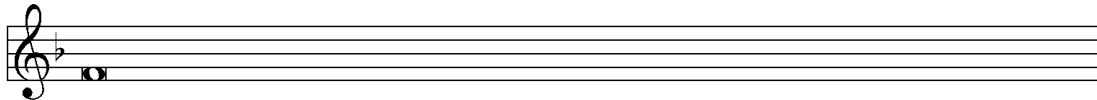
KYRIE

A In peace, let us pray to the Lord. **B** Lord, have mer - cy.

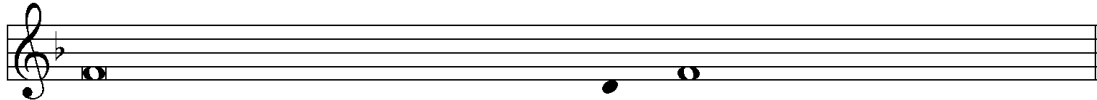
A For the peace from above, and for our salvation, let us pray to the Lord.



C Lord, have mer - cy.



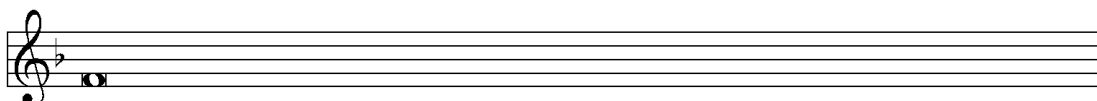
A For the peace of the whole world, for the well-being of the Church of God,



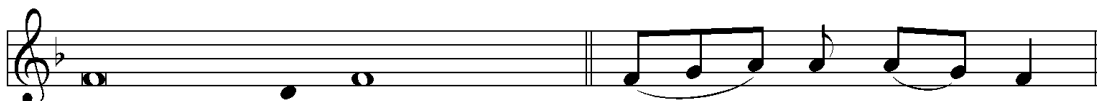
and for the unity of all, let us pray to the Lord.



C Lord, have mer - cy.



A For this holy house, and for all who offer here their worship and praise,



let us pray to the Lord.

C Lord, have mer - cy.

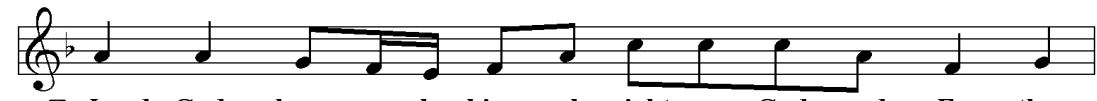


A Help, save, comfort, and defend us, gra - cious Lord. **C** A - men

HYMN OF PRAISE



A Glory to God in the highest, and peace to his peo - ple on earth.



C Lord God, heav - en - ly king, al - might - y God and Fa - ther:



C Lord God, heav - en - ly king, al - might - y God and Fa - ther:



We wor - ship you, we give you thanks, we praise you for your glo - ry.



Lord Je - sus Christ, on - ly Son of the Fa - ther, Lord God, Lamb of God:

You take a - way the sin of the world; have mer - cy on us.

You are seat - ed at the right hand of the Fa - ther; re - ceive our prayer.

For you a - lone are the Ho - ly One, you a - lone are the Lord,

you a - lone are the Most High, Je - sus Christ, with the Ho - ly Spir - it,

in the glo - ry of God the Fa - ther. A - men

PRAYER OF THE DAY

P: Let us pray. O Lord, preserve your church with your perpetual mercy.

C: Without your help, we mortals will fail; remove far from us everything that is harmful, and lead us toward all that gives life and salvation, through Jesus Christ, our Savior and Lord. Amen.

PSALM 149:1-5, 9b *(read responsively)*

P: Hallelujah! Sing to the Lord a new song,
God's praise in the assembly of the faithful.

**C: Let Israel rejoice in their maker;
let the children of Zion be joyful in their ruler.**

P: Let them praise their maker's name with dancing;
let them sing praise with tambourine and harp.

**C: For the Lord takes pleasure in the people
and adorns the poor with victory.**

P: Let the faithful rejoice in triumph;
let them sing for joy on their beds.

C: This is the glory of all his saints. Hallelujah!

THE HOLY GOSPEL Matthew 18:15-20

MESSAGE

Pastor Corey Bjertness

HYMN OF THE DAY

My Hope is Built on Nothing Less

1 My hope is built on noth - ing less than
 2 When dark - ness veils his love - ly face, I
 3 His oath, his cov - e - nant, his blood sus -
 4 When he shall come with trum - pet sound, oh,

Je - sus' blood and righ - teous - ness; no mer - it of my
 rest on his un - chang - ing grace; in ev - 'ry high and
 tain me in the rag - ing flood; when all sup - ports are
 may I then in him be found, clothed in his righ - teous -

own I claim, but whol - ly lean on Je - sus' name.
 storm - y gale my an - chor holds with - in the veil.
 washed a - way, he then is all my hope and stay.
 ness a - lone, re - deemed to stand be - fore the throne!

Refrain

On Christ, the sol - id rock, I stand; all oth - er ground is sink - ing sand.

APOSTLES' CREED *(please stand as you are able)*

I believe in God, the Father almighty, creator of heaven and earth.

I believe in Jesus Christ, his only Son, our Lord.

**He was conceived by the power of the Holy Spirit,
 and born of the virgin Mary.**

**He suffered under Pontius Pilate,
 was crucified, died, and was buried.**

He descended into hell.

On the third day he rose again. He ascended into heaven,

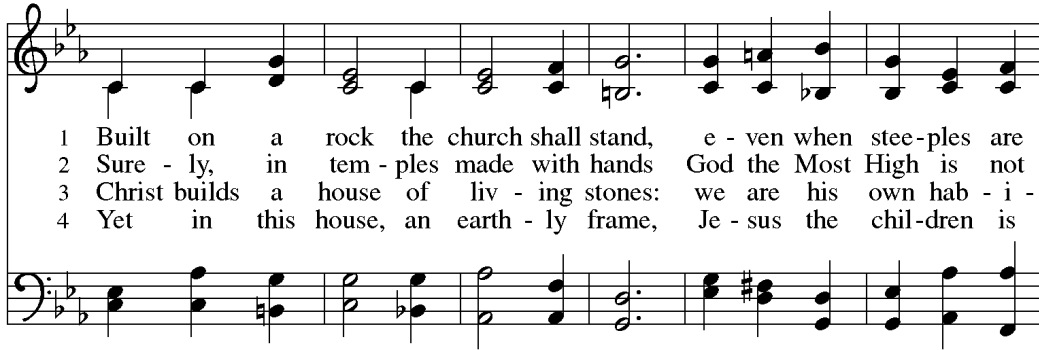
and is seated at the right hand of the Father.

He will come again to judge the living and the dead.

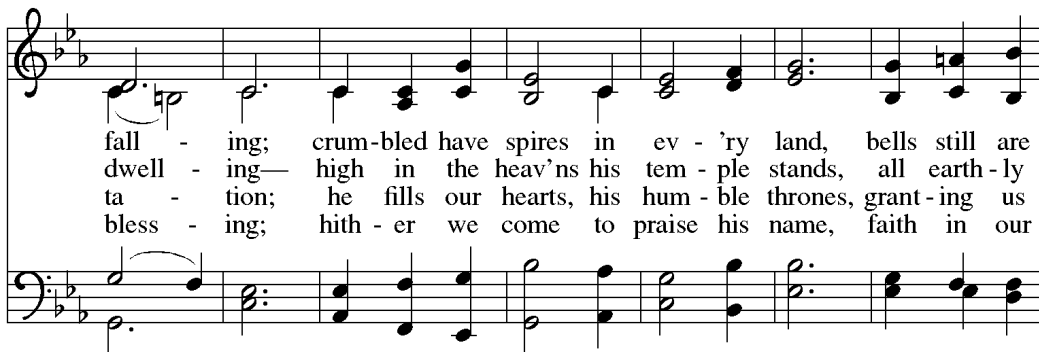
I believe in the Holy Spirit, the holy catholic Church, the communion of saints,
the forgiveness of sins, the resurrection of the body, and the life everlasting. Amen.

(please be seated)

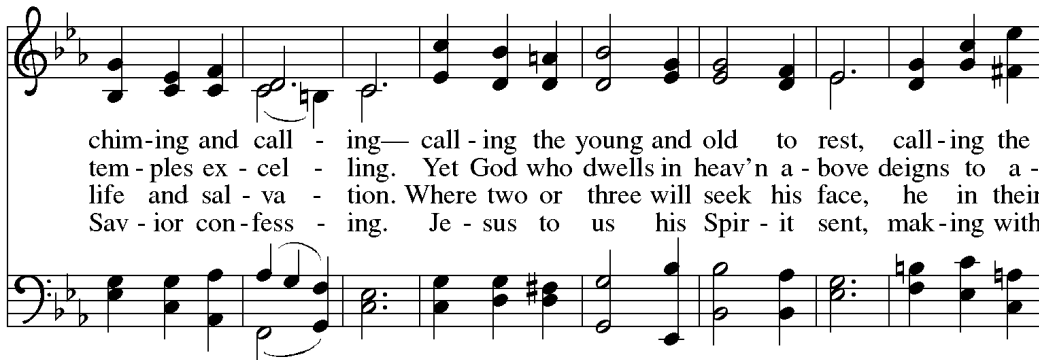
HYMN: *Built on a Rock*



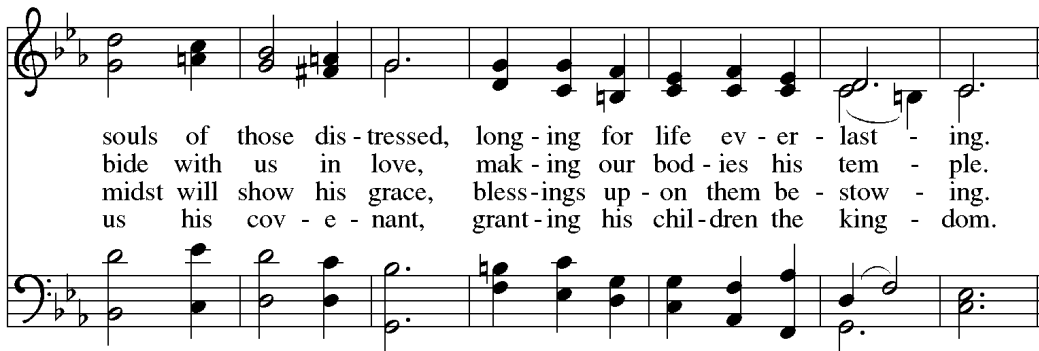
1 Built on a rock the church shall stand, e - ven when stee - ples are
2 Sure - ly, in tem - ples made with hands God the Most High is not
3 Christ builds a house of liv - ing stones: we are his own hab - i -
4 Yet in this house, an earth - ly frame, Je - sus the chil - dren is



fall - ing; crum - bled have spires in ev - 'ry land, bells still are
dwell - ing— high in the heav'ns his tem - ple stands, all earth - ly
ta - tion; he fills our hearts, his hum - ble thrones, grant - ing us
bless - ing; hith - er we come to praise his name, faith in our



chim - ing and call - ing— call - ing the young and old to rest, call - ing the
tem - ples ex - cel - ling. Yet God who dwells in heav'n a - bove deigns to a -
life and sal - va - tion. Where two or three will seek his face, he in their
Sav - ior con - fess - ing. Je - sus to us his Spir - it sent, mak - ing with



souls of those dis - tressed, long - ing for life ev - er - last - ing.
bide with us in love, mak - ing our bod - ies his tem - ple.
midst will show his grace, bless - ings up - on them be - stow - ing.
us his cov - e - nant, grant - ing his chil - dren the king - dom.

PRAYERS FOR GOD'S PEOPLE

MUSICAL MEDITATION/OFFERING

I Know The Lord's Laid His Hands on Me — H.T. Burleigh
David Ferreira, vocalist; Michael Olson, accompanist

OFFERING OPTIONS

Thank you for your new or continued generosity towards God's mission at First Lutheran Church. Out of concern for safety, we will not pass the offering plate during worship but will have baskets available at each exit where you can leave your offering.

We also have a number of digital, no contact ways to give.
Online Giving is an easy and convenient way to "set it and forget it."

-  **ONLINE GIVING:** www.flcfargo.org (from the Quick Links banner select "Donate Now")
-  **TEXT TO GIVE:** Text 701.354.1495 with the dollar amount you would like to give
-  **MAIL A CHECK:** 619 Broadway, Fargo, ND 58102

LORD'S PRAYER *(sung by the congregation)*

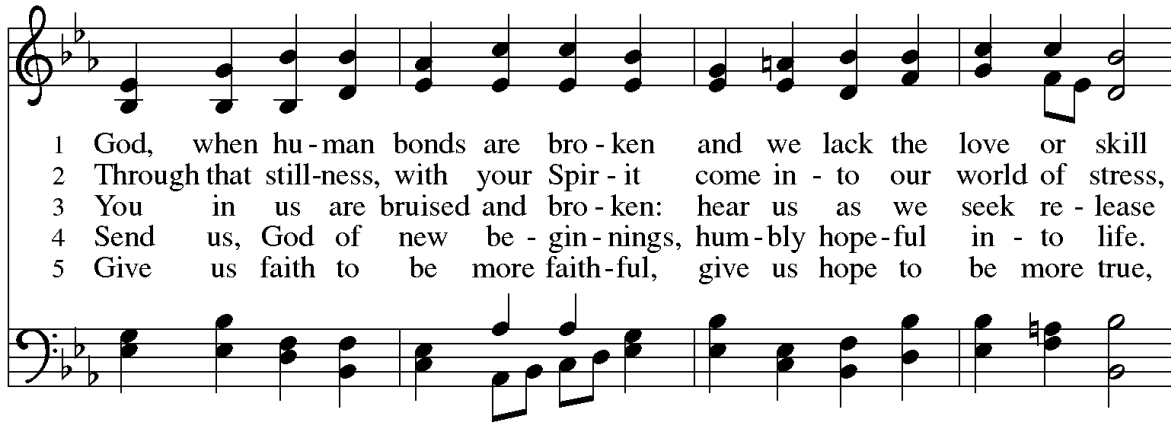
**Our Father, which art in heaven,
hallowed be thy name,
thy kingdom come, thy will be done, on earth as it is in heaven.
Give us this day our daily bread;
and forgive us our debts, as we forgive our debtors
and lead us not into temptation, but deliver us from evil.
For thine is the kingdom,
and the power,
and the glory, forever. Amen.**

BENEDICTION & THREEFOLD AMEN *(please stand as you are able)*

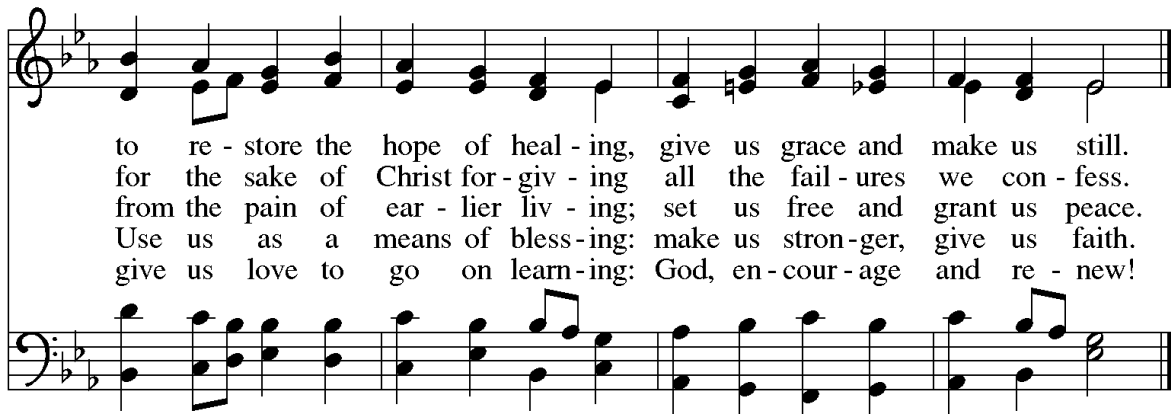
*Order of worship printed from Sundays and Seasons.com. Copyright 2015 Augsburg Fortress.
All rights reserved.*

*Reprinted by permission under Augsburg Fortress Liturgies Annual License # 13275-L.
Music Reprinted under OneLicense.net #721505*

CLOSING HYMN *God, When Human Bonds are Broken*



1 God, when hu - man bonds are bro - ken and we lack the love or skill
2 Through that still - ness, with your Spir - it come in - to our world of stress,
3 You in us are bruised and bro - ken: hear us as we seek re - lease
4 Send us, God of new be - gin - nings, hum - bly hope - ful in - to life.
5 Give us faith to be more faith - ful, give us hope to be more true,



to re - store the hope of heal - ing, give us grace and make us still.
for the sake of Christ for - giv - ing all the fail - ures we con - fess.
from the pain of ear - lier liv - ing; set us free and grant us peace.
Use us as a means of bless - ing: make us stron - ger, give us faith.
give us love to go on learn - ing: God, en - cour - age and re - new!

DISMISSAL (*please exit row by row to avoid close contact*)

P: Go in peace. Serve the Lord.

C: **Thanks be to God.**

POSTLUDE *Oh, Praise Ye the Lord* — Robert J. Powell
Michael Olson, organist

LIVE • LOVE • LEAD

AUTUMN 2020

Like Jesus

SERMON SERIES

WHO ARE WE ON BROADWAY?

We are called to let our light shine (Matt. 6:18)

Broadway is the location of our church building, but Broadway is also the greatest theater stage in the world, and nowhere do streetlights shine brighter than on Broadway. Together, we look back to see forward and claim our identity in Christ as the people of First on Broadway—called to live, love, and lead like Jesus.

WEEKLY READING

BROADWAY REVIEW

Sept. 13/16: Mark 1:1-14

Sept. 20/23: Mark 2:13-17

LIVE LIKE JESUS

Sept. 27/30: Mark 3:1-12

Oct. 4/7: Mark 4:1-20

Oct. 11/14: Mark 12:28-34

LOVE LIKE JESUS

Oct. 18/21: Mark 9:33-37, 10:13-16

Oct. 25/28: Mark 12:28-34, Psalm 46

Nov. 1/4: Mark 5:21-43

LEAD LIKE JESUS

Nov. 8/11: Mark 6:6-13

Nov. 15/18: Mark 3:13-19, 6:6-13

Nov. 22/25: Mark 11:12-25



FIRST LUTHERAN CHURCH
INSPIRE. EQUIP. REACH.



THE STORIES OF DR. SEUSS, one of the world's most beloved children's authors, are both imaginative and entertaining. But a closer look at these stories reveals that many are inspirational as well as instructive. Children's Ministry Director, Marlee Robertson, will help us find parallels between the actions of cats in

hats, Grinches, Snitches, and Sneetches, and other lessons found in Scripture. Bring the Bible to life with meaning and relevance using the creative wisdom of Dr. Seuss.

Register at flcfargo.org and you will receive a [Zoom link](#) that will enable you to join the study.



The Gospel According to Dr. Seuss

ONLINE STUDY FOR PARENTS*



MONDAYS, 7-8 P.M., STARTING SEPTEMBER 14

* FOR PARENTS OF PRESCHOOL AND GRADE SCHOOL KIDS



FIRST LUTHERAN CHURCH
INSPIRE. EQUIP. REACH.



LUTHERAN
WORLD RELIEF

Help Us Fill 100+ — KITS —

This fall, First Lutheran will support Lutheran World Relief's School Kit ministry by providing school supply kits to children and adults in need. We invite you to

shop now

for the best back-to-school deals **in August** to help fill as many kits as FLC can! Please drop off the supplies after Labor Day to help us prepare for the packing!

Items to buy for kits:

- 70-sheet notebooks of wide- or college-ruled paper
- 30-centimeter rulers, or with centimeters & inches
- pencil sharpeners
- scissors (safety scissors with embedded steel blades)
- #2 pencils with erasers
- black or blue ballpoint pens (no gel ink)
- crayons (16 or 24 count)
- 2 ½" erasers

Visit lwr.org/schoolkits for details.

Questions? Contact **Pastor Stephanie**:
701.235.7389 or stollefson@flcfargo.org



NEWS&EVENTS

Visit our website for more detailed information and to register: www.flcfargo.org.

New Fall In-Person Fall Worship Schedule

Wednesdays: beginning September 9

- 1:30 p.m. Wednesday Fellowship Worship in the Sanctuary
- 6 p.m. Contemporary Worship in the Celebration Center

Sundays: beginning September 13

- 9 a.m. Traditional Worship in the Sanctuary
- 9 a.m. Contemporary Worship in the Celebration Center
- 10:30 a.m. Contemporary Worship in the Celebration Center

Christian Education Classes: beginning October 4 and 7:

- Kids at First, 56ers, Student Leadership Academy (confirmation) and High School Youth Group programming will begin Sunday, October 4, and Wednesday, October 7. [Visit flcfargo.org](http://www.flcfargo.org) for details and to register.

Confirmation 2020

Sunday, October 18, 1 p.m., New Celebration Center

2019/20 9th Graders who were finishing confirmation/SLA classes:

COVID-19 brought a halt to our spring classes this past March, but you are invited to affirm your baptism and be confirmed this coming October. Contact Emily Halver, ehalver@flcfargo.org, or 701.235.7389 to schedule your faith project meeting with a pastor (we request these meetings be completed by October 4).

Questions? Contact Pastor Stephanie Tollefson, stollefson@flcfargo.org, or 701.235.7389.

CHURCH OFFICE: 701.235.7389

info@flcfargo.org

OFFICE HOURS / WELCOME DESK:

MON, TUES, THURS 8 a.m. - 5 p.m.

WEDS 8 a.m. - 7 p.m.

FRI 8 a.m. - 12 p.m.

SUN 8:30 a.m. - 12 p.m.

Wi-Fi: FLCGuest, password: FirstLutheran619

CELEBRATEPRAYER

Our Prayer Partners meet every Tuesday morning at 9 a.m. and the staff gathers daily for prayer at 10 a.m. in the Chapel. The following have asked to be prayed for publicly: *Mark Rasmussen, Amy Carey, Richard Brudvik, Betty Mausbach-Jevne, Wes Briggs, Lisa Kunkel, Lona Binder-Hermanson, Gail Zimprich, Kathy Otheim, Char Maas, Jim Frisk, Ann Brown, Steve Brown, and Archie.*

The sympathy and prayers of First Lutheran are offered to the family and friends of **Nathaniel Haws**, brother of Jaeda Ertelt; and **Rev. Merrill Ronning**, who served at First Lutheran in the late 1970s.

CHRISTIANEDUCATION

Kids are an important part of FLC! Christian education classes will begin October 4 and 7 for 3-year olds through high school.

Beginning in October FLC will offer both in-person and online Christian education classes (offerings and times vary by grade level). Visit flcfargo.org for details and to register.

The Little Gifts Nursery will remain closed this fall until further notice.

YOURMINISTRYTEAM

Pr. Corey Bjertness	cbjertness@flcfargo.org
Pr. Laurie Neill	lneill@flcfargo.org
Pr. Stephanie Tollefson	stollefson@flcfargo.org
Pr. Marty Tollefson	mtollefson@flcfargo.org
Rollie Johnson	rjohnson@flcfargo.org
Shelly Erickson	serickson@flcfargo.org
Erik Carlson	ecarlson@flcfargo.org
Marlee Robertson	mrobertson@flcfargo.org
Polly Kloster	pkloster@flcfargo.org
Meggie Bjertness, Intern Pr.	mbjertness@flcfargo.org
Katie Kringstad, Intern Pr.	kkringstad@flcfargo.org

View the entire staff online at www.flcfargo.org

Council Officers:

Sindy Keller, President	701.238.2088
Gary Haugo, Vice President	701.261.5172
Tracy Farmer, Treasurer	701.356.0324
Chris Kraemer, Secretary	701.371.5718
Gary Inman, Past Chair	701.371.1563

THISWEEK

Sunday, Sep 6—Labor Day Weekend

- 9 a.m. **Traditional Worship**, Sanctuary
- 9 a.m. **Traditional Worship Online**
- 10 a.m. **Coffee Fellowship**, The Great Hall
- 11 a.m. **Contemporary Worship**, New Celebration Center
- 11 a.m. **Contemporary Worship Online**

Monday, Sep 7—Labor Day

Church/church office closed
in observance of Labor Day

Tuesday, Sep 8

- 7 a.m. **Men's Bible Study**, Fellowship Hall
- 9 a.m. **Prayer Partners Meeting**, Heritage Room

Wednesday, Sep 9

- 12:45 p.m. **Organ Recital by Michael Olson**, Sanctuary
- 1:30 p.m. **Wednesday Fellowship**,
Sanctuary/The Great Hall
- 6 p.m. **Wednesday Night Worship**,
New Celebration Center
- 6 p.m. **Wednesday Night Worship Online**

Thursday, Sep 10

- 12 p.m. **Bible Study**, Heritage Room
- 8 p.m. **Women's Online Book Club**, Zoom meeting

Friday, Sep 11

- 12 p.m. **Church/Church Office Closes**
- 6 p.m. **Wedding Rehearsal for Telander/Smith**,
Sanctuary

Saturday, Sep 12

- 4 p.m. **Wedding of Abby Telander and Austin Smith**,
Sanctuary

Sunday, Sep 13

- 9 a.m. **Traditional Worship**, Sanctuary
- 9 a.m. **Traditional Worship Online**
- 9 a.m. **Contemporary Worship**, New Celebration Center
- 10 a.m. **Coffee Fellowship**, The Great Hall
- 10:30 a.m. **Contemporary Worship**, New Celebration Center
- 10:30 a.m. **Contemporary Worship Online**

CELEBRATE BAPTISM

Today we celebrate the baptism of **Camden Christian**, son of Samantha and Grant Christian.

SCHOOLKITSFORLWR

Help Us Fill 100+ School Kits Lutheran World Relief!


This fall, First Lutheran will support Lutheran World Relief's School Kit ministry by providing school supply kits to children in need. We invite you to shop now for the best back-to-school deals to help fill as many kits as FLC can! Please drop off the supplies at the church office to help us prepare for the packing! (Deadline to drop off donations is September 30.)

Education is one of the strongest tools a community has for breaking the cycle of poverty. Ensuring that girls attend school, especially in places where their access is deprioritized, has even stronger results. School Kits contain essential supplies to help children – and in some cases, adults – continue learning in the face of serious obstacles. That learning leads to a better life for them, their families and their communities.


BROADCAST MINISTRY

- **Online:** Sundays 9 & 10:30 a.m., Wednesdays 6 p.m.; flcfargo.org and Facebook.
- **Radio:** Sundays 9 a.m., 970 AM and 93.1 FM.
- **TV:** Fargo: Sundays 1:30 p.m., Tuesdays 6:30 p.m. (channels Midco 68, Sparklight 1068); Moorhead: Sundays 5 p.m., Tuesdays 7 p.m. (channels Midco 99, Sparklight 69).

SUPPORT FIRST LUTHERAN MINISTRIES:

 **ONLINE GIVING:** www.flcfargo.org (from the Quick Links banner select "Donate Now")

 **TEXT TO GIVE:** Text 701.354.1495 with the dollar amount you would like to give

 **MAIL A CHECK:** 619 Broadway, Fargo, ND 58102