

MARK 2:23-28; 3:1-6
SEPTEMBER 27

SANCTUARY

*Let your
light
shine*

LIVE • LOVE • LEAD

like Jesus

ON BROADWAY



FIRST LUTHERAN CHURCH
INSPIRE • EQUIP • REACH



619 BROADWAY, FARGO ND | 701.235.7389 | WWW.FLCFARGO.ORG |

FIRST LUTHERAN CHURCH

INSPIRE. EQUIP. REACH.

WELCOME! If you believe Jesus is the risen Son of God, or if you are here to explore the mysteries of faith... **WELCOME.** We are just glad you are here.

Please make yourself at home and let us know if there is anything you need. This bulletin will help you navigate worship at First Lutheran and opportunities to serve and connect with our faith community.



WHAT ARE WE ABOUT?

We want to make Jesus famous. It is as simple as that. Our purpose in gathering here today is to make Jesus known and to know him better. Because if this isn't about Jesus, it isn't worth doing.



COMMUNION The sacrament of Communion is celebrated the first and third Sundays and Wednesdays of each month at all services. All are welcome to participate in this act of worship and remembrance. Children

who do not receive communion are welcome to come forward for a blessing.

WORSHIP We believe that all instruments, all voices and all people should praise the Lord. We do not worship a "style," we worship Jesus.



Traditional Worship follows a liturgy and the music centers around the organ and piano. The order of worship is inserted into the bulletin. [9 a.m. Sundays in the Sanctuary on the north end of the church; 1:30 p.m. Wednesdays in the Sanctuary]



CONNECTING We would love to get to know you better. Peruse our website for ways to connect through service, study, or community-building events.



Celebration Worship uses a praise band and the order of worship and song lyrics are projected on the wall. [9 & 10:30 a.m. Sundays and 6 p.m. Wednesdays in the New Celebration Center on the west end of the church]



OFFERING We give tithes and offerings as an act of worship, obedience, and thanksgiving. *If you are a guest, you are not expected or obligated to give.*

Please join us in The Great Hall 10-11 a.m. on Sundays for coffee, cookies, and conversation.



BELONGING If you would like to call FLC your church home, come to our "Belong" class. Contact Marty Tollefson at mtollefson@flcfargo.org or 701.235.7389 for more information. Our next Belong class will be held October 8.

The mission of First Lutheran Church is to bring people into a relationship with Jesus Christ and to help them grow in the Christian faith.

September 27, 2020: Live, Love, Lead Like Jesus

WORSHIP PARTICIPANTS

Message	Pastor Laurie Neill
Assisting Pastor	Pastor Stephanie Tollefson
Music Minister	Michael Olson
Cantor	Gene Okerlund

PRELUDE

Adagio — Giovanni Battista Pergolesi
Michael Olson, organist

WELCOME and ANNOUNCEMENTS

PRAYER OF INVOCATION

CONFESSION & FORGIVENESS *(please stand as you are able)*

P: In the name of the Father, and of the ✠ Son, and of the Holy Spirit.

C: Amen.

P: God of all mercy and consolation, come to the help of your people, turning us from our sin to live for you alone.

C: Amen.

P: If we have died with Christ, we will also live with Christ.

Let us confess our sin to the one who is faithful.

Silence for reflection

P: God our helper,

C: we confess the many ways we have failed to live as your disciples.

We have not finished what we began.

We have feasted with friends but ignored strangers.

We have been captivated by our possessions.

Lift our burdens, gracious God. Refresh our hearts and forgive our sin.

Raise us to the new life you have chosen for us

in Jesus Christ, our Savior and Lord. Amen.

P: There is rejoicing in heaven when sinners repent.

Put your trust in these promises: God will never leave you or forsake you.

You who were lost have been found. For the sake of ✠ Jesus Christ,

your sins are forgiven. Rejoice with the angels at this good news.

C: Amen.

OPENING HYMN*Holy, Holy, Holy, Lord God Almighty!*

1 Ho - ly, ho - ly, ho - ly, Lord God Al - might - y!
 2 Ho - ly, ho - ly, ho - ly! All the saints a - dore thee,
 3 Ho - ly, ho - ly, ho - ly! Though the dark - ness hide thee,
 4 Ho - ly, ho - ly, ho - ly! Lord God Al - might - y!

Ear - ly in the morn - ing our song shall rise to thee.
 cast - ing down their gold - en crowns a - round the glass - y sea;
 though the eye of sin - ful - ness thy glo - ry may not see,
 All thy works shall praise thy name in earth and sky and sea.

Ho - ly, ho - ly, ho - ly, mer - ci - ful and might - y!
 cher - u - bim and ser - a - phim fall - ing down be - fore thee,
 on - ly thou art ho - ly; there is none be - side thee,
 Ho - ly, ho - ly, ho - ly, mer - ci - ful and might - y!

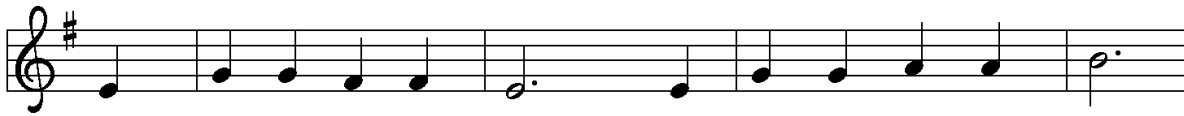
God in three per - sons, bless - ed Trin - i - ty!
 which wert and art, and ev - er - more shalt be.
 per - fect in pow'r, in love and pu - ri - ty.
 God in three per - sons, bless - ed Trin - i - ty!

*(please be seated)***GREETING**

P: The grace of our Lord Jesus Christ, the love of God,
 and the communion of the Holy Spirit be with you all.

C: **And also with you.**

KYRIE



- 1 Have mer - cy on us, Lord, and hear our sol - emn prayer.
- 2 Have mer - cy on us, Christ, and wash a - way our sin.
- 3 Have mer - cy on us, Lord; make sin and shame de - part.



We come to hear your liv - ing word; it saves us from de - spair.
Pour out your grace and make us whole that new life may be - gin.
Re - new us with your sav - ing pow'r; cre - ate in us new hearts!

HYMN OF PRAISE



Al - le - lu - ia! Sing to Je - sus; his the scep - ter,
Al - le - lu - ia! King e - ter - nal, Lord om - nip - o -



his the throne; Al - le - lu - ia! his the tri - umph, his the
tent we own; Al - le - lu - ia! born of Mar - y, earth your



vic - to - ry a - lone. Hark! The songs of peace - ful
foot - stool, heav'n your throne. As with - in the veil you



Zi - on thun - der like a might - y flood: "Je - sus
en - tered, robed in flesh, our great high priest, here on



out of ev - 'ry na - tion has re - deemed us by his blood."
earth both priest and vic - tim in the eu - cha - ris - tic feast.

PRAYER OF THE DAY

P: Let us pray.

C: God of love, giver of life, you know our frailties and failings. Give us your grace to overcome them, keep us from those things that harm us, and guide us in the way of salvation, through Jesus Christ, our Savior and Lord. Amen.

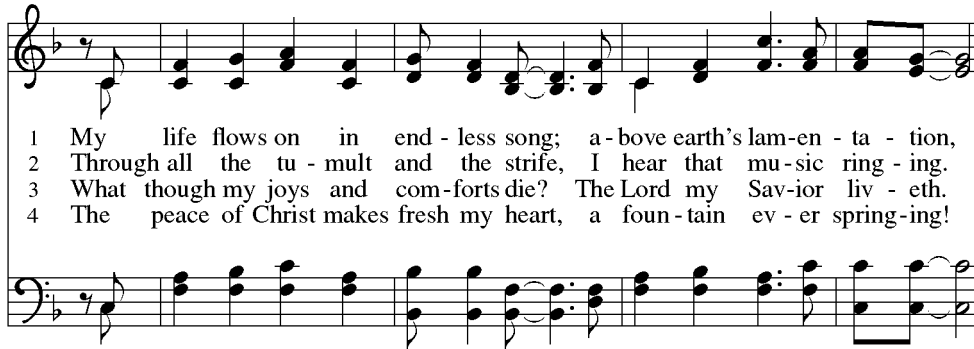
MEN'S VOCAL ENSEMBLE

You'll Never Walk Alone – arr. David Ferreira
Dorian Olson, David Ferreira, Gene Okerlund, Terry Yoney
Michael Olson, accompanist

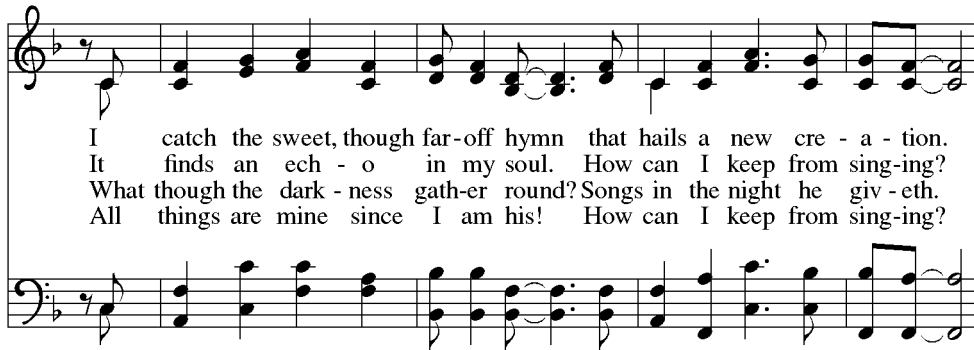
THE HOLY GOSPEL: Mark 2:23-28; 3:1-6

MESSAGE Pastor Laurie Neill

HYMN OF THE DAY *My Life Flows On in Endless Song*

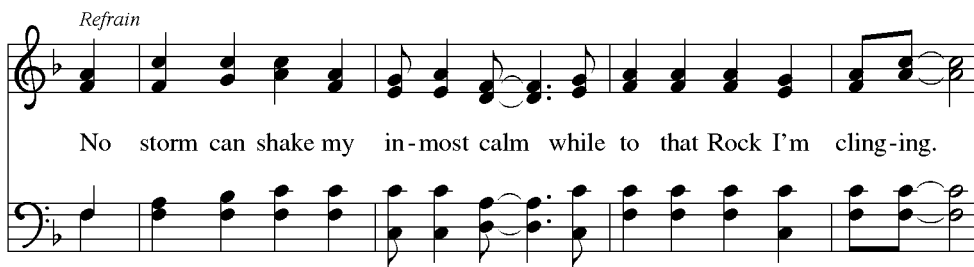


1 My life flows on in end - less song; a - bove earth's lam - en - ta - tion,
2 Through all the tu - mult and the strife, I hear that mu - sic ring - ing.
3 What though my joys and com - forts die? The Lord my Sav - ior liv - eth.
4 The peace of Christ makes fresh my heart, a foun - tain ev - er spring - ing!



I catch the sweet, though far - off hymn that hails a new cre - a - tion.
It finds an ech - o in my soul. How can I keep from sing - ing?
What though the dark - ness gath - er round? Songs in the night he giv - eth.
All things are mine since I am his! How can I keep from sing - ing?

Refrain



No storm can shake my in - most calm while to that Rock I'm cling - ing.



Since Christ is Lord of heav - en and earth, how can I keep from sing - ing?

APOSTLES' CREED *(please stand as you are able)*

I believe in God, the Father almighty, creator of heaven and earth.

I believe in Jesus Christ, his only Son, our Lord.

**He was conceived by the power of the Holy Spirit,
and born of the virgin Mary.**

**He suffered under Pontius Pilate,
was crucified, died, and was buried.**

He descended into hell.

**On the third day he rose again. He ascended into heaven,
and is seated at the right hand of the Father.**

He will come again to judge the living and the dead.

**I believe in the Holy Spirit, the holy catholic Church, the communion of saints,
the forgiveness of sins, the resurrection of the body, and the life everlasting. Amen.**

(please be seated)

PRAYERS FOR GOD'S PEOPLE

MINISTRY SPOTLIGHT - Global Missions


MUSICAL MEDITATION/OFFERING


You Raise Me Up – Rolf Lovland and Brendan Graham
Gene Okerlund, vocalist; Michael Olson, accompanist

OFFERING OPTIONS

Thank you for your new or continued generosity towards God's mission at First Lutheran Church. Out of concern for safety, we will not pass the offering plate during worship but will have baskets available at each exit where you can leave your offering.

We also have a number of digital, no contact ways to give.
Online Giving is an easy and convenient way to "set it and forget it."

 **ONLINE GIVING:** www.flcfargo.org (from the Quick Links banner select "Donate Now")

 **TEXT TO GIVE:** Text 701.354.1495 with the dollar amount you would like to give

 **MAIL A CHECK:** 619 Broadway, Fargo, ND 58102

LORD'S PRAYER *(sung by the congregation)*

**Our Father, which art in heaven,
hallowed be thy name,
thy kingdom come, thy will be done, on earth as it is in heaven.
Give us this day our daily bread;
and forgive us our debts, as we forgive our debtors
and lead us not into temptation, but deliver us from evil.
For thine is the kingdom,
and the power,
and the glory, forever. Amen.**

BENEDICTION & THREEFOLD AMEN *(please stand as you are able)*

CLOSING HYMN *I Want to Walk as a Child of the Light*

1 I want to walk as a child of the light. I want to
2 I want to see . . . the bright-ness of God. I want to
3 I'm look - ing for . . . the com - ing of Christ. I want to

fol - low Je - sus. God set the stars to give
look at Je - sus. Clear Sun of righ - teous - ness,
be with Je - sus. When we have run . . . with

light to the world. The star of my life is Je - sus.
shine on my path, and show me the way to the Fa - ther.
pa - tience the race, we shall know the joy of Je - sus.

Refrain

In him there is no dark-ness at all. The night and the day are both a - like. The Lamb is the light of the cit - y of God. Shine in my heart, Lord Je - sus.

DISMISSAL (*please exit row by row to avoid close contact*)

P: Go in peace. Serve the Lord.

C: **Thanks be to God.**

POSTLUDE

Praise the Lord Who Reigns Above — arr. Harold DeCou

Michael Olson, organist

Worship is over. Now service begins.

Order of worship printed from Sundays and Seasons.com. Copyright 2015 Augsburg Fortress.

All rights reserved.

Reprinted by permission under Augsburg Fortress Liturgies Annual License # 13275-L.

Music Reprinted under OneLicense.net #721505



FIRST LUTHERAN CHURCH
INSPIRE. EQUIP. REACH.



LUTHERAN
WORLD RELIEF

Help Us Fill 100+ **SCHOOL — KITS —**

This fall, First Lutheran will support Lutheran World Relief's School Kit ministry by providing school supply kits to children and adults in need.

We invite you to

shop now

for the best back-to-school deals **in August** to help fill as many kits as FLC can! Please drop off the supplies after Labor Day to help us prepare for the packing!

Items to buy for kits:

- 70-sheet notebooks of wide- or college-ruled paper
- 30-centimeter rulers, or with centimeters & inches
- pencil sharpeners
- scissors (safety scissors with embedded steel blades)
- #2 pencils with erasers
- black or blue ballpoint pens (no gel ink)
- crayons (16 or 24 count)
- 2 ½" erasers

Visit lwr.org/schoolkits for details.

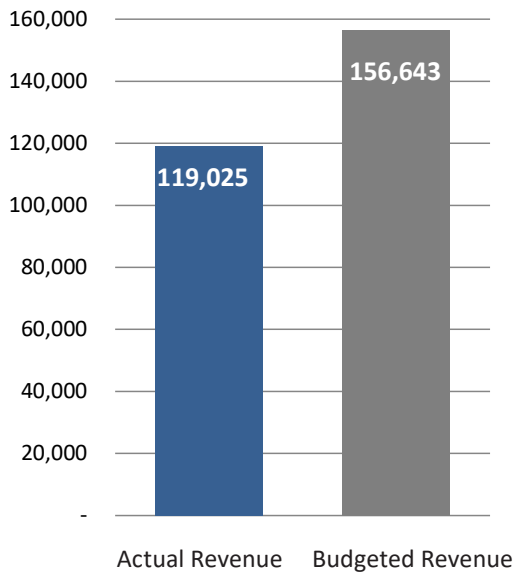
Questions? Contact **Pastor Stephanie**:
701.235.7389 or stollefson@flcfargo.org



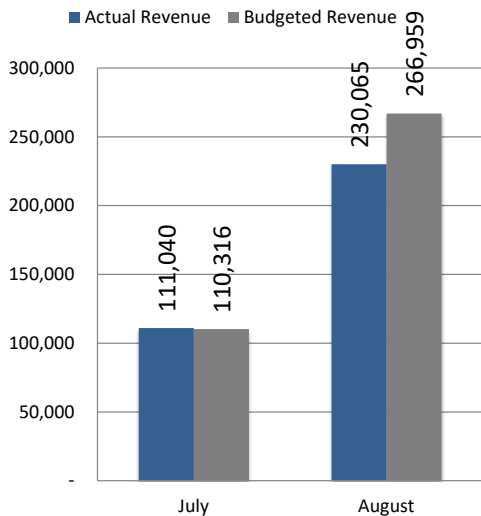
GENEROSITY REPORT



FLC AUGUST STEWARDSHIP



STEWARDSHIP CONTRIBUTIONS FY 2020-21 GENERAL FUND



AUGUST MEMORIALS

In Memory of Beulah Bjugstad (Rick Soggie's Mother)

for Emergency Food Pantry from Audrey Hahn
for Kitchen from Rick & Lisa Soggie

In Memory of Don Nettum

for Helping Hands from Ardelle Nordbo
for Helping Hands from Gary & Ruth Hanson
for Helping Hands from Jamie Kinne
for Sunday School from Kathleen Otheim
for Helping Hands from Ken & Marcia Retzer
for Helping Hands from Larry & Sue Wild
for Foundation from Norman & Eunice Jones
for Helping Hands from Rob & Karla Lyngstad

In Memory of Grant Simonson

for Youth from Reed & Marianna Malm

In Memory of Lois & Jim Street

for Jesus Christ from Steven Street

In Memory of Louis Larson

for Foundation from Norman & Eunice Jones

In Memory of Lyle G Johnson

for Foundation from Norman & Eunice Jones
for 20/20 Club from Richard & Bev Levenson

In Memory of Odin Dahl

for General from Sandi Dahl

In Memory of Rev John Mehl

for Foundation from Gary & Ruth Hanson
for 20/20 Club from Richard & Bev Levenson

In Memory of Shirley Meyer

for Foundation from Norman & Eunice Jones

In Memory of Shirley Tietz

for First In Mission from Cecil Vitalis
for Global Missions from David & Mary Rasmussen
for First In Mission from Jane Linde Capistran
for First In Mission from Ken & Marcia Retzer
for Quilters from Larry & Sue Wild
for First In Mission from Mavis Tjon
for First In Mission from Michael & Janet Rostad

In Memory of Thomas Edmunds

for Sunday School from Reed & Marianna Malm
for Youth from Rob & Karla Lyngstad

NEWS&EVENTS

Visit our website for more detailed information and to register: www.flcfargo.org.

New In-Person Fall Worship Schedule

Wednesdays: beginning September 9

- 1:30 p.m. Wednesday Fellowship Worship in the Sanctuary
- 6 p.m. Contemporary Worship in the Celebration Center

Sundays: beginning September 13

- 9 a.m. Traditional Worship in the Sanctuary
- 9 a.m. Contemporary Worship in the Celebration Center
- 10:30 a.m. Contemporary Worship in the Celebration Center

Christian Education Classes: beginning October 4 and 7:

- Kids at First, 56ers, Student Leadership Academy (confirmation) and High School Youth Group programming will begin Sunday, October 4, and Wednesday, October 7. [Visit flcfargo.org](http://www.flcfargo.org) for details and to register.

Blood Drive

Thursday, October 8, 3:30-6:15 p.m., The Great Hall

Vitalant, formerly United Blood Services, is the sole blood provider to nearly 70 hospitals in our regional area. Locally, 250 volunteer donors are needed every day to meet local patient needs. Vitalant is hosting a blood drive at First Lutheran on Thursday, October 8 from 3:30-6:15 p.m. Please sign-up to donate at vitalant.org or by calling Polly Kloster, faith community nurse, at the church, 701.235.7389.

New Member "Belong" Class

Thursday, October 8, 7 p.m., Adult Ed Room

Welcome! Whether you have been coming to First Lutheran for a long time or are new to us, you are invited to make it official and become a member. Contact Pastor Marty, mtollefson@flcfargo.org, or 701.235.7389.

CHURCH OFFICE: 701.235.7389, info@flcfargo.org

OFFICE HOURS / WELCOME DESK:

MON, TUES, THURS 8 a.m. - 5 p.m.

WEDS 8 a.m. - 7 p.m.

FRI 8 a.m. - 12 p.m.

SUN 8:30 a.m. - 12 p.m.

Wi-Fi: FLCGuest, password: FirstLutheran619

CELEBRATEPRAYER

Our Prayer Partners meet every Tuesday morning at 9 a.m. and the staff gathers daily for prayer at 10 a.m. in the Chapel. The following have asked to be prayed for publicly: *Michelle Reitan, Rick Fuller, Brenda Cummins, Mark Rasmussen, Amy Carey, Betty Mausbach-Jevne, Wes Briggs, Lisa Kunkel, Lona Binder-Hermanson, Gail Zimprich, Kathy Otheim, Char Maas, Jim Frisk, Ann Brown, Steve Brown, and Archie.*

The sympathy and prayers of First Lutheran are offered to the family and friends of **David Colemer**; and **Tami Jones**, daughter of Delores Peterson.

CHRISTIANEDUCATION

Kids are an important part of FLC! Christian education classes begin October 4 and 7 for 3-year olds through high school.

Beginning in October FLC will offer both in-person and online Christian education classes (offerings and times vary by grade level). Visit flcfargo.org for details and to register.

The Little Gifts Nursery will remain closed this fall until further notice.

YOURMINISTRYTEAM

Pr. Corey Bjertness	cbjertness@flcfargo.org
Pr. Laurie Neill	lneill@flcfargo.org
Pr. Stephanie Tollefson	stollefson@flcfargo.org
Pr. Marty Tollefson	mtollefson@flcfargo.org
Rollie Johnson	rjohnson@flcfargo.org
Shelly Erickson	serickson@flcfargo.org
Erik Carlson	ecarlson@flcfargo.org
Marlee Robertson	mrobertson@flcfargo.org
Polly Kloster	pkloster@flcfargo.org
Meggie Bjertness , Intern Pr.	mbjertness@flcfargo.org
Katie Kringstad , Intern Pr.	kkringstad@flcfargo.org

View the entire staff online at www.flcfargo.org

Council Officers:

Sindy Keller, President	701.238.2088
Gary Haugo, Vice President	701.261.5172
Tracy Farmer, Treasurer	701.356.0324
Chris Kraemer, Secretary	701.371.5718
Gary Inman, Past Chair	701.371.1563

THISWEEK

Sunday, Sep 27

- 9 a.m. **Traditional Worship**, Sanctuary
- 9 a.m. **Traditional Worship Online**
- 9 a.m. **Contemporary Worship**, New Celebration Center
- 10 a.m. **Coffee Fellowship**, The Great Hall
- 10:30 a.m. **Contemporary Worship**, New Celebration Center
- 10:30 a.m. **Contemporary Worship Online**
- 6 p.m. **Men's Night Out Pig Roast**, Ady & Rollie's Ranch, 505 66th Ave N, Moorhead

Monday, Sep 28

No Scheduled Activities

Tuesday, Sep 29

- 7 a.m. **Men's Bible Study**, Fellowship Hall
- 12:30 p.m. **Women's Online Book Club**, Zoom meeting
- 7 p.m. **Men's Tuesday Night Bible Study**, Fellowship Hall

Wednesday, Sep 30

- 9 a.m. **Women's Online Book Club**, Zoom meeting
- 12:45 p.m. **Organ Recital by Susan Clambey**, Sanctuary
- 1:30 p.m. **Wednesday Fellowship**, Sanctuary/The Great Hall
- 6 p.m. **Wednesday Night Worship**, New Celebration Center

Thursday, Oct 1

- 8:30 a.m. **Helping Hands**, The Great Hall
- 12 p.m. **Bible Study**, Heritage Room
- 8 p.m. **Women's Online Book Club**, Zoom meeting

Friday, Oct 2

- 12 p.m. **Church/Church Office Closes**
- 2 p.m. **Funeral for David Colemer**, New Celebration Center
- 5 p.m. **Wedding Rehearsal for Anderson/Blaufuss**, Sanctuary

Saturday, Oct 3

- 4 p.m. **Wedding of Lacey Anderson and Tim Blaufuss**, Sanctuary

Sunday, Oct 4—Communion Sunday & Fall Kick-off of Christian Education Classes

- 9 a.m. **Traditional Worship**, Sanctuary
- 9 a.m. **Traditional Worship Online**
- 9 a.m. **Contemporary Worship**, New Celebration Center
- 9 a.m. **Kids at First classes** (start in worship with parents), various locations
- 10 a.m. **Coffee Fellowship**, The Great Hall
- 10:30 a.m. **Contemporary Worship**, New Celebration Center
- 10:30 a.m. **Contemporary Worship Online**
- 10:30 a.m. **Kids at First classes** (start in worship with parents), various locations

HELPINGHANDS

Helping Hands resumes Thursday, October 1, 8:30 a.m.

Join the guys for coffee and a sweet treat. The group will gather for conversation and camaraderie! Please wear a mask and follow social distance spacing.

CELEBRATEBAPTISM

Today we celebrate the baptism of **Slaytor Becker**, daughter of Cassandra and Jonathan Becker.

SCHOOLKITSFORLWR

Help Us Fill 100+ School Kits Lutheran World Relief!

This fall, First Lutheran will support Lutheran World Relief's School Kit ministry by providing school supply kits to children in need. We invite you to shop now for the best back-to-school deals to help fill as many kits as FLC can! Please drop off the supplies at the church office to help us prepare for the packing! (Deadline to drop off donations is September 30.)

Education is one of the strongest tools a community has for breaking the cycle of poverty. Ensuring that girls attend school, especially in places where their access is deprioritized, has even stronger results. School Kits contain essential supplies to help children – and in some cases, adults – continue learning in the face of serious obstacles. That learning leads to a better life for them, their families and their communities.

BROADCASTMINISTRY

- **Online:** Sundays 9 & 10:30 a.m., flcfargo.org and Facebook.
- **Radio:** Sundays 9 a.m., 970 AM and 93.1 FM.
- **TV:** Fargo: Sundays 1:30 p.m., Tuesdays 6:30 p.m. (channels Midco 68, Sparklight 1068); Moorhead: Sundays 5 p.m., Tuesdays 7 p.m. (channels Midco 99, Sparklight 69).

NEXTWEEK'S SCRIPTURE


Wednesday, September 30

- Celebration: Mark 2:23-28; 3:1-6

Sunday, October 4:

- Sanctuary: Mark 4:1-20
- Celebration: Mark 2:23-28; 3:1-6

SUPPORT FIRST LUTHERAN MINISTRIES:

 **ONLINE GIVING:** www.flcfargo.org (from the Quick Links banner select "Donate Now")

 **TEXT TO GIVE:** Text 701.354.1495 with the dollar amount you would like to give

 **MAIL A CHECK:** 619 Broadway, Fargo, ND 58102