

20

SUNDAY, FEBRUARY 28  
JOHN 8:31-38

21

LIVE  
LOVE  
LEAD  
*like Jesus*

*let your  
light  
shine*

MATT. 6:18

**ON BROADWAY**



FIRST LUTHERAN CHURCH  
INSPIRE. EQUIP. REACH.



619 BROADWAY, FARGO ND | 701.235.7389 | WWW.FLCFARGO.ORG |

# FIRST LUTHERAN CHURCH

INSPIRE. EQUIP. REACH.

**WELCOME!** If your life has been a moral victory or a scarlet letter...  
**WELCOME.** We are just glad you are here.

Please make yourself at home and let us know if there is anything you need. This bulletin will help you navigate worship at First Lutheran and opportunities to serve and connect with our faith community.



### WHAT ARE WE ABOUT?

*We want to make Jesus famous.* It is as simple as that. Our purpose in gathering here today is to make Jesus known and to know him better. Because if this isn't about Jesus, it isn't worth doing.



**COMMUNION** The sacrament of Communion is celebrated at all services the first and third Sundays of each month; and at all Wednesday services during Lent. All are welcome to participate in this act of worship

and remembrance. Children who do not receive communion are welcome to come forward for a blessing.

**WORSHIP** We believe that all instruments, all voices and all people should praise the Lord. We do not worship a "style," we worship Jesus.



**Traditional Worship** follows a liturgy and the music centers around the organ and piano. The order of worship is inserted into the bulletin. [9 a.m. Sundays; 1:30 p.m. Wednesdays in the Sanctuary on the north end of the church.]



**CONNECTING** We would love to get to know you better. Peruse our website for ways to connect through service, study, or community-building events. Fill out the blue post-it so we can keep in touch.



**Celebration Worship** uses a praise band and the order of worship and song lyrics are projected on the wall. [9 & 10:30 a.m. Sundays in the Celebration Center on the west end of the church]



**OFFERING** We give tithes and offerings as an act of worship, obedience, and thanksgiving. *If you are a guest, you are not expected or obligated to give.*



**BELONGING** Each quarter, we host a new member BELONG class to introduce and welcome new members to First Lutheran. The next class is planned for this spring (date TBD). Contact the church office for details.

**February 28, 2021**  
***Live, Love, and Lead Like Jesus***

**WORSHIP PARTICIPANTS**

<b>Message</b>	<b>Rollie Johnson</b>
<b>Assisting Pastor</b>	<b>Pastor Laurie Neill</b>
<b>Music Minister</b>	<b>Michael Olson</b>
<b>Cantor</b>	<b>David Ferreira</b>

**PRELUDE:**

*Jesus, Keep Me Near the Cross* – Gilbert M. Martin  
Michael Olson, organist

**WELCOME and ANNOUNCEMENTS**

**PRAYER OF INVOCATION**

**CONFESSION & FORGIVENESS:** *(please stand as you are able)*

P: Blessed be the holy Trinity, † one God,  
who shines in glory, clothes us in compassion,  
and bears gifts of mercy for all.

**C: Amen.**

P: Let us confess our sins with confidence in God's promise of forgiveness.

*(Silence for reflection)*

P: God, wonderful counselor,

**C: we confess that we have turned from your gifts and chosen our own way.  
We have not made room for you in our hearts or in our world.  
We have lived in fear; we have not welcomed the stranger;  
we desire gifts that will not endure.  
Forgive us our sins, known and unknown,  
and open us to receive the peace of Jesus  
dwelling in and among us. Amen.**

P: God's lovingkindness has appeared to us in Christ our Savior.

We are saved, not by anything we have done, but by God's mercy poured out on us richly.

In the name of † Jesus Christ, your sins are forgiven.

Through the Spirit living in you, God give you faith to trust Jesus,  
who is Love born for you, now and always.

**C: Amen.**

**OPENING HYMN:** *What a Friend We Have in Jesus*

(ELW 742)

1 What a friend we have in Je - sus, all our sins and griefs to bear!  
2 Have we tri - als and temp-ta - tions? Is there trou-ble an - y-where?  
3 Are we weak and heav-y - lad - en, cum-bered with a load of care?

What a priv - i - lege to car - ry ev - 'ry-thing to God in prayer!  
We should nev - er be dis - cour - aged— take it to the Lord in prayer.  
Pre - cious Sav - ior, still our ref - uge— take it to the Lord in prayer.

Oh, what peace we of - ten for - feit; oh, what need-less pain we bear—  
Can we find a friend so faith - ful who will all our sor-rows share?  
Do your friends de-spise, for - sake you? Take it to the Lord in prayer.

all be - cause we do not car - ry ev - 'ry-thing to God in prayer!  
Je - sus knows our ev - 'ry weak - ness— take it to the Lord in prayer.  
In his arms he'll take and shield you; you will find a so - lace there.

*(please be seated)*

**VOCAL ENSEMBLE:**

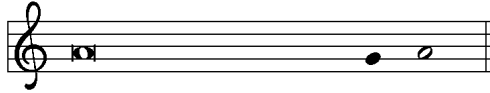
*Followers of the Lamb* – arr. Philip R. Dietterich  
Beverly Bjertness, Kathy Ferreira, Dorian Olson, Carl Wichman, David Ferreira  
Jan Stoeffel, tambourine; Michael Olson, accompanist

**GREETING:**

**P:** The grace of our Lord Jesus Christ, the love of God,  
and the communion of the Holy Spirit be with you all.

**C:** **And also with you.**

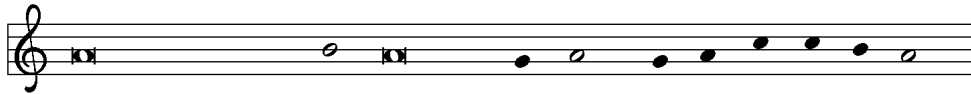
**KYRIE**



In peace, let us pray to the Lord.



Lord, have mer - cy.



For the peace from a-b-ove, and for our sal - vation, let us pray to the Lord.



Lord, have mer - cy.



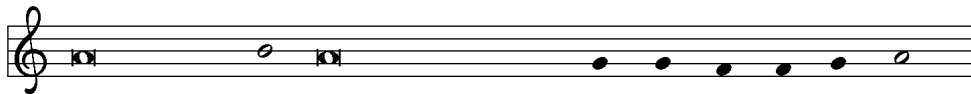
For the peace of the whole world, for the well-being of the church of God,



and for the unity of all, let us pray to the Lord.



Lord, have mer - cy.



For this holy house, and for all who offer here their wor-ship and praise,



let us pray to the Lord. Lord have mer - cy.



Help, save, comfort, and de - fend us, gra-cious Lord. A - men.

The image shows a musical score for the hymn "Lord Jesus, Think on Me". It consists of two systems of music. Each system has a vocal line (treble clef) and a piano accompaniment line (bass clef). The key signature is one sharp (F#), and the time signature is 4/4. The lyrics are printed below the vocal line. The first system contains the first four lines of the hymn, and the second system contains the remaining lines.

1 Lord Je - sus, think on me, and purge a - way my sin;  
2 Lord Je - sus, think on me, by anx - ious thoughts op - pressed;  
3 Lord Je - sus, think on me, nor let me go a - stray;  
4 Lord Je - sus, think on me, that, when the flood is past,  
from self - ish pas - sions set me free and make me pure with - in.  
let me your lov - ing ser - vant be and taste your prom - ised rest.  
through dark - ness and per - plex - i - ty point out your cho - sen way.  
I may the e - ter - nal bright - ness see and share your joy at last.

**PRAYER OF THE DAY:**

P: Let us pray.

C: O Lord God, you are the holy lawgiver, you are the salvation of your people. By your Spirit renew us in your covenant of love, and train us to care tenderly for all our neighbors, through Jesus Christ, our Savior and Lord. Amen.

**GOSPEL SCRIPTURE:** John 8:31-38

**MESSAGE:** Rollie Johnson

HYMN OF THE DAY:

*How Great Thou Art*

(ELW 856)

1 O Lord my God, when I in awe-some won-der con-sid-er  
 2 When through the woods and for-est glades I wan-der, I hear the  
 3 But when I think that God, his Son not spar-ing, sent him to  
 4 When Christ shall come, with shout of ac-c-la-ma-tion, and take me

all the works thy hand hath made, I see the stars, I hear the might-y  
 birds sing sweet-ly in the trees; when I look down from loft-y moun-tain  
 die, I scarce can take it in, that on the cross my bur-den glad-ly  
 home, what joy shall fill my heart! Then I shall bow in hum-ble ad-o-

thun-der, thy pow'r through-out the u-ni-verse dis-played;  
 gran-deur and hear the brook and feel the gen-tle breeze;  
 bear-ing he bled and died to take a-way my sin;  
 ra-tion and there pro-claim, "My God, how great thou art!"

*Refrain*

Then sings my soul, my Sav-ior God, to thee, how great thou

art! How great thou art! Then sings my soul, my Sav-ior God, to

thee, how great thou art! How great thou art!

## OFFERING:

### **OFFERING OPTIONS**

Thank you for your new or continued generosity towards God's mission at First Lutheran Church. In-person offerings may be dropped in the offering baskets at the entry/exit. Offerings can also be mailed to the church office and we encourage you to use our online giving and texting options.

**Online Giving is an easy and convenient way to "set it and forget it."**



**ONLINE GIVING:** [www.flcfargo.org](http://www.flcfargo.org) (from the Quick Links banner select "Donate Now")



**TEXT TO GIVE:** Text 701.354.1495 with the dollar amount you would like to give



**MAIL A CHECK:** 619 Broadway, Fargo, ND 58102

## MUSICAL MEDITATION:

*Balm in Gilead* – Harry T. Burleigh  
David Ferreira, vocalist; Michael Olson, accompanist

**APOSTLES' CREED:** *(please stand as you are able)*

**I believe in God, the Father almighty, creator of heaven and earth.**

**I believe in Jesus Christ, his only Son, our Lord.**

**He was conceived by the power of the Holy Spirit, and born of the virgin Mary.**

**He suffered under Pontius Pilate, was crucified, died, and was buried. He descended into hell. On the third day he rose again. He ascended into heaven, and is seated at the right hand of the Father. He will come again to judge the living and the dead.**

**I believe in the Holy Spirit, the holy catholic Church, the communion of saints, the forgiveness of sins, the resurrection of the body, and the life everlasting. Amen.**

*(please be seated)*



## PRAYERS FOR GOD'S PEOPLE

**LORD'S PRAYER**    *(spoken by the congregation)*

**Our Father, who art in heaven, hallowed be thy name,  
thy kingdom come, thy will be done, on earth as it is in heaven.  
Give us this day our daily bread;  
and forgive us our trespasses, as we forgive those who trespass against us;  
and lead us not into temptation, but deliver us from evil.  
For thine is the kingdom, and the power, and the glory,  
forever and ever. Amen.**

**BENEDICTION & THREEFOLD AMEN**    *(please stand as you are able)*

*(continued on the next page)*

SENDING HYMN: *Oh, for a Thousand Tongues to Sing*

(ELW 886)



1 Oh, for a thou - sand tongues to sing my great Re-deem - er's praise,  
2 My gra - cious Mas - ter and my God, as - sist me to pro - claim,  
3 The name of Je - sus charms our fears and bids our sor - rows cease,  
4 He speaks, and lis - t'ning to his voice, new life the dead re - ceive;



the glo - ries of my God and king, the tri - umphs of his grace!  
to spread through all the earth a - broad the hon - ors of your name.  
sings mu - sic in the sin - ner's ears, brings life and health and peace.  
the mourn - ful, bro - ken hearts re - joice, the hum - ble poor be - lieve.



5 Look unto him, your Savior own,  
O fallen human race!  
Look and be saved through faith alone,  
be justified by grace!

6 To God all glory, praise, and love  
be now and ever giv'n  
by saints below and saints above,  
the church in earth and heav'n.

POSTLUDE:

*Jesus, Still Lead On* – Paul Manz

Michael Olson, organist

# NIGHT HIKE

**Friday, March 5, 8 p.m.**

**meet at Rollie's house  
505 66th Ave. N., Moorhead**

**When the sun takes its daily dive below the horizon and delivers nighttime to your doorstep, what better time is there to literally “walk in the dark”?**

**By hiking at night, you deliberately reduce your ability to use your vision to navigate. This gets you to focus on your other senses, and even hone our focus on God.**

*Contact Rollie with questions, [rjohnson@flcfargo.org](mailto:rjohnson@flcfargo.org)*



**FIRST LUTHERAN CHURCH**  
INSPIRE. EQUIP. REACH.



FIRST LUTHERAN CHURCH  
INSPIRE. EQUIP. REACH.



# MOVIE NIGHT

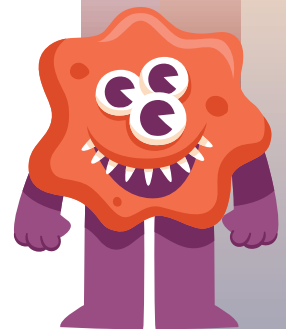
Featured movie: **Monsters Inc.**

Kids 1st - 4th grade

Friday, March 12, Great Hall

drop off 5:30-6 p.m., pickup at 8 p.m. sharp

Are you afraid of the dark? What monsters lurk there? Bring your pillow/blankets and munch on popcorn and pizza as we watch this delightful Disney movie about monsters. Sully is one of the top scarers at Monsters Inc., but he and his best friend Mike Wazowski meet their match in Boo, a little girl from the human world. She boldly goes where no human has gone before!



## NEWS&EVENTS

Visit our website for more detailed information and to register: [www.flcfargo.org](http://www.flcfargo.org).

### Lent 2021: Learning to Walk in the Dark

"... If I say, "Surely the darkness shall cover me, and the light around me become night," even the darkness is not dark to you; the night is as bright as the day, for darkness is as light to you." Psalm 139:7-12

This Lenten season, we will be learning what it means to walk in the dark. Join us through worship, book study, and other events to explore the mysteries of darkness.

In-person worship: Wednesdays, February 24-March 24

- 1:30 p.m., Wednesday Fellowship, Sanctuary
- 5:30 p.m., Sanctuary
- 6 p.m., Celebration Center

Lenten book studies:

During Lent we are reading Barbara Brown Taylor's book *Learning to Walk in the Dark*. Register for a book study at [flcfargo.org](http://flcfargo.org) or at the church office.

In-person Adult Book Study:

- Tuesdays, 11 a.m., Fellowship Hall
- Tuesdays, 7 p.m., Fellowship Hall

Online Women's Book Study:

- Tuesdays, 1:30 p.m., Zoom meeting
- Thursdays, 7 p.m., Zoom meeting

Night Hike

Experience "walking in the dark" by joining Rollie for a Night Hike. Let your other senses come to life to navigate hiking through darkness. Friday, March 5, 8 p.m. Meet at Rollie's house: 505 66th Ave N, Moorhead.

Kids' Movie Night Out—Parents Date Night

Friday, March 12, drop-off 5:30-6 p.m., pick-up 8 p.m.

For kids grades 1-4

Featured movie: Disney/Pixar's Monsters Inc.

Bring your own pillow/blanket. Popcorn and pizza treats!

## CELEBRATEPRAYER

We as God's people believe in the power of prayer. Please pray for the following who have asked to be prayed for publicly: *Brenda Cummins, Amy Carey, Jim Frisk, Gail Zimprich, Julie Anderson, Janice Ames, Pam Burley, Dan and Janna Westerholm, Marilyn Parker, Betty Wilson, Liz Gibb, Annette Ward-Reddick, Barb Orvedal, LaVern Hoganson, Roger Hansen, Marlene Young, Wes Briggs, and George.*

The sympathy and prayers of First Lutheran are offered to the family and friends of **Dennis Belgarde**, father of Jeny Runsvold, husband of Gail Belgarde; **Eugene Johnson**, brother of Gloria Meyers, uncle of Nancy Gress; and **Ethel Henderson**.

## FLOWERS

The altar flowers today are given in honor of **Audrey Hahn's** birthday on February 28.

## CHRISTIANEDUCATION

Kids are an important part of FLC! In-person classes will resume in Fall 2021. Online classes and at home resources will continue through the school year.

Nursery (0-5 yrs): Closed until further notice (COVID precaution)

Kids at First (age 3-4th grade): FLOCK Magazine and FLOCK online resources

56ers (5-6th grade): on break during Lent (kids are encouraged to attend worship with their family)

Servant Leadership Academy/Confirmation

(7-8th grade): online Zoom, Wednesdays, 7 p.m.

Youth Group (9-12th grade): Wednesdays, 8 p.m., Great Hall

## YOURMINISTRYTEAM

<b>Pr. Corey Bjertness</b>	<a href="mailto:cbjertness@flcfargo.org">cbjertness@flcfargo.org</a>
<b>Pr. Laurie Neill</b>	<a href="mailto:lnNeill@flcfargo.org">lnNeill@flcfargo.org</a>
<b>Pr. Stephanie Tollefson</b>	<a href="mailto:stollefson@flcfargo.org">stollefson@flcfargo.org</a>
<b>Pr. Marty Tollefson</b>	<a href="mailto:mtollefson@flcfargo.org">mtollefson@flcfargo.org</a>
<b>Rollie Johnson</b>	<a href="mailto:rjohnson@flcfargo.org">rjohnson@flcfargo.org</a>
<b>Shelly Erickson</b>	<a href="mailto:serickson@flcfargo.org">serickson@flcfargo.org</a>
<b>Erik Carlson</b>	<a href="mailto:ecarlson@flcfargo.org">ecarlson@flcfargo.org</a>
<b>Marlee Robertson</b>	<a href="mailto:mrobertson@flcfargo.org">mrobertson@flcfargo.org</a>
<b>Polly Kloster</b>	<a href="mailto:pkloster@flcfargo.org">pkloster@flcfargo.org</a>

View the entire staff online at [www.flcfargo.org](http://www.flcfargo.org)

Council Officers:

Sindy Keller, President	701.238.2088
Gary Haugo, Vice President	701.261.5172
Tracy Farmer, Treasurer	701.356.0324
Chris Kraemer, Secretary	701.371.5718
Gary Inman, Past Chair	701.371.1563

**CHURCH OFFICE: 701.235.7389, [info@flcfargo.org](mailto:info@flcfargo.org)**

**OFFICE HOURS / WELCOME DESK:**

**MON, TUES, WEDS, THURS 8 a.m.—5 p.m.**

**FRI: 8 a.m.—12 p.m.**

**SUN 8:30 a.m.—12 p.m.**

**Wi-Fi: FLCGuest, password: FirstLutheran619**



## THISWEEK

### Sunday, February 28

- 9 a.m. **Traditional Worship**, Sanctuary
- 9 a.m. **Traditional Worship Online & Radio**
- 9 a.m. **Contemporary Worship**, Celebration Center
- 10 a.m. **Coffee Fellowship**, The Great Hall
- 10:30 a.m. **Contemporary Worship**, Celebration Center
- 10:30 a.m. **Contemporary Worship Online**
- 12:30 p.m. **Open Doors For All Nations Worship**, CrossTalk Café

### Monday, March 1

- 9 a.m. **Quilters Ministry**, Fellowship Hall
- 1 p.m. **Staff Meeting**, Adult Ed Room

### Tuesday, March 2

- 7 a.m. **Men's Bible Study**, Fellowship Hall
- 11 a.m. **Adult Lenten Bible Study**, Fellowship Hall
- 1:30 p.m. **Online Women's Lenten Study**, Zoom meeting
- 6 p.m. **Tae Kwon Do**, Gym
- 7 p.m. **Adult Lenten Bible Study**, Fellowship Hall

### Wednesday, March 3

- 12:45 p.m. **Organ Recital by Michael Olson**, Sanctuary
- 1:30 p.m. **Wednesday Fellowship**, Sanctuary/Great Hall
- 5:30 p.m. **In-Person Lenten Worship**, Sanctuary
- 6 p.m. **In-Person Lenten Worship**, Celebration Center
- 6:30 p.m. **Vocal Ensemble Rehearsal**, Sanctuary/Celebration Station
- 7 p.m. **Online Confirmation/SLA Class**, Zoom meeting
- 8 p.m. **High School Youth Group**, The Great Hall

### Thursday, March 4

- 8:15 a.m. **Quilters Ministry**, Fellowship Hall
- 7 p.m. **Online Women's Lenten Study**, Zoom meeting

### Friday, March 5

- 12 p.m. **Church/Church Office Closed**
- 8 p.m. **Night Hike**, 505 66th Ave N, Moorhead

### Saturday, March 6

No scheduled activities

### Sunday, March 7—Communion Sunday

- 9 a.m. **Traditional Worship**, Sanctuary
- 9 a.m. **Traditional Worship Online & Radio**
- 9 a.m. **Contemporary Worship**, Celebration Center
- 10 a.m. **Coffee Fellowship**, The Great Hall
- 10:30 a.m. **Contemporary Worship**, Celebration Center
- 10:30 a.m. **Contemporary Worship Online**
- 12:30 p.m. **Open Doors For All Nations Worship**, CrossTalk Café

## CELEBRATE BAPTISM

Today we celebrate the baptism of **Britta Gustafson**, daughter of Rebecca and Jalon Gustafson; and recently baptized **Sylvi Gress**, daughter of Carrie and Joe Gress.

## BROADCAST MINISTRY

- **Online:** Sundays 9 & 10:30 a.m., flcfargo.org and Facebook.
- **Radio:** Sundays 9 a.m., 970 AM and 93.1 FM.
- **TV:** Fargo: Sundays 1:30 p.m., Tuesdays 6:30 p.m. (channels Midco 68, Sparklight 1068); Moorhead: Sundays 5 p.m., Tuesdays 7 p.m. (channels Midco 99, Sparklight 69).

## NEXTWEEK'S SCRIPTURE

Sunday, March 7:

- Sanctuary: John 6:1-15
- Celebration: John 8:31-38

### SUPPORT FIRST LUTHERAN MINISTRIES:



**ONLINE GIVING:** [www.flcfargo.org](http://www.flcfargo.org) (from the Quick Links banner select "Donate Now")



**TEXT TO GIVE:** Text 701.354.1495 with the dollar amount you would like to give



**MAIL A CHECK:** 619 Broadway, Fargo, ND 58102