

20

SUNDAY, MARCH 7  
JOHN 8:31-38

21

LIVE  
LOVE  
LEAD  
*like Jesus*

*Let your  
light  
shine*

MATT. 6:18

**ON BROADWAY**



FIRST LUTHERAN CHURCH  
INSPIRE. EQUIP. REACH.



619 BROADWAY, FARGO ND | 701.235.7389 | WWW.FLCFARGO.ORG |

# FIRST LUTHERAN CHURCH

INSPIRE. EQUIP. REACH.

**WELCOME!** Rich or poor... Satisfied or hungry... Liberal or conservative... Traditional or contemporary... Casual or formal... **WELCOME.** We are just glad you are here.

Please make yourself at home and let us know if there is anything you need. This bulletin will help you navigate worship at First Lutheran and opportunities to serve and connect with our faith community.



### WHAT ARE WE ABOUT?

*We want to make Jesus famous.* It is as simple as that. Our purpose in gathering here today is to make Jesus known and to know him better. Because if this isn't about Jesus, it isn't worth doing.



**COMMUNION** The sacrament of Communion is celebrated at all services the first and third Sundays of each month; and at all Wednesday services during Lent. All are welcome to participate in this act of worship

and remembrance. Children who do not receive communion are welcome to come forward for a blessing.

**WORSHIP** We believe that all instruments, all voices and all people should praise the Lord. We do not worship a "style," we worship Jesus.



**Traditional Worship** follows a liturgy and the music centers around the organ and piano. The order of worship is inserted into the bulletin. [9 a.m. Sundays; 1:30 p.m. Wednesdays in the Sanctuary on the north end of the church.]



**CONNECTING** We would love to get to know you better. Peruse our website for ways to connect through service, study, or community-building events. Fill out the blue post-it so we can keep in touch.



**Celebration Worship** uses a praise band and the order of worship and song lyrics are projected on the wall. [9 & 10:30 a.m. Sundays in the Celebration Center on the west end of the church]



**OFFERING** We give tithes and offerings as an act of worship, obedience, and thanksgiving. *If you are a guest, you are not expected or obligated to give.*



**BELONGING** Each quarter, we host a new member BELONG class to introduce and welcome new members to First Lutheran. The next class is planned for this spring (date TBD). Contact the church office for details.

**March 7, 2021: Celebration Worship**  
***Live, Love, and Lead Like Jesus***

---

**WELCOME & ANNOUNCEMENTS**

**OPENING PRAYER**

**SONG:** Who You Say I Am

**SONG:** In My Place

**CONFESSION & FORGIVENESS:**

*Dear Heavenly Father,  
We lower our heads before you and we confess  
that we have too often forgotten that we are  
yours. Sometimes we carry on our lives as if  
there was no God and we fall short of being  
a credible witness to You. For these things we  
ask your forgiveness and we also ask for your  
strength. Give us clear minds and open hearts  
so we may witness You in our world. Remind us  
to be who You would have us to be regardless of  
what we are doing or who we are with. Hold us  
to You and build our relationship with You and  
with those You have given us on earth. Amen.*

**QUIET TIME**

**SONG:** In My Place (*refrain*)

**SCRIPTURE:** John 8:31-38

**MESSAGE:** Rollie Johnson

**OFFERING:**

*Thank you for your new or continued generosity  
towards God's mission at First Lutheran Church.  
In-person offerings may be dropped in the offering  
baskets at the entry/exit. Offerings can also be  
mailed to the church office and we encourage you  
to use our online giving and texting options. Please  
reference the back page of the worship bulletin for  
more information or visit our website.*

**SONG:** God with Us

**WORDS OF PROMISE**

**LORD'S PRAYER**

**COMMUNION/SONG:** Lord, I Need You

**PRAYERS FOR GOD'S PEOPLE**

**BLESSING/BENEDICTION**

**SENDING SONG:** Remind Me Who I Am

L: Go in peace and serve the Lord.

**C: Thanks be to God!**

***Worship has ended. Now service begins.***



FIRST LUTHERAN CHURCH  
INSPIRE. EQUIP. REACH.



# MOVIE NIGHT

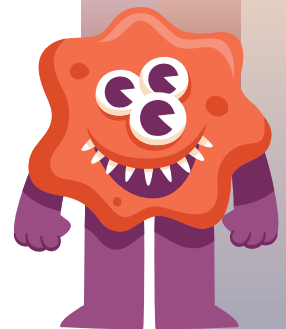
Featured movie: **Monsters Inc.**

Kids 1st - 4th grade

Friday, March 12, Great Hall

drop off 5:30-6 p.m., pickup at 8 p.m. sharp

Are you afraid of the dark? What monsters lurk there? Bring your pillow/blankets and munch on popcorn and pizza as we watch this delightful Disney movie about monsters. Sully is one of the top scarers at Monsters Inc., but he and his best friend Mike Wazowski meet their match in Boo, a little girl from the human world. She boldly goes where no human has gone before!





FIRST LUTHERAN CHURCH  
INSPIRE. EQUIP. REACH.



## Congregational Survey

*Your input is important!*

We invite you to participate in a congregational assessment for First Lutheran. A link to the online survey will be emailed to you and your family. The survey link will be open for your response between **March 5-28**. All responses will be anonymous.

If you do not receive the email, send a message to **[info@flcfargo.org](mailto:info@flcfargo.org)**.

If you'd prefer a paper copy, it is available upon request at the front desk.

*God Bless*



**FIRST  
LUTHERAN  
CHURCH**



**LUTHERAN  
WORLD RELIEF**

## Calling All Closet Cleaners and Miracle Makers...

*This spring,*

First Lutheran is partnering with Lutheran World Relief to make baby care kits to provide the basics to families in need. We invite you to participate!

Visit [lwr.org/babycarekits](http://lwr.org/babycarekits) for more information on kit items and instructions for making cloth diapers from flannel or cotton t-shirts.

Donations can be dropped off at the church Welcome Desk now through Mother's Day, Sunday, May 9.

### Kit items include

- » Lightweight cotton t-shirts (no onesies)
- » Long or short-sleeved gowns or sleepers (without feet)
- » Receiving blankets; cloth diapers (flat fold preferred)
- » Jackets, sweaters, or sweatshirts with a hood
- » Socks
- » Hand towels (dark color recommended)
- » Bath-size bars of gentle soap
- » Diaper pins
- » Gently-used cloth diapers

**Questions?** Contact Pr. Stephanie Tollefson,  
[stollefson@flcfargo.org](mailto:stollefson@flcfargo.org), or 701.235.7389.

## NEWS&EVENTS

Visit our website for more detailed information and to register: [www.flcfargo.org](http://www.flcfargo.org).

### Lent 2021: Learning to Walk in the Dark

"... If I say, "Surely the darkness shall cover me, and the light around me become night," even the darkness is not dark to you; the night is as bright as the day, for darkness is as light to you." Psalm 139:7-12

This Lenten season, we will be learning what it means to walk in the dark. Join us through worship, book study, and other events to explore the mysteries of darkness.

In-person worship: Wednesdays, February 24-March 24

- 1:30 p.m., Wednesday Fellowship, Sanctuary
- 5:30 p.m., Sanctuary
- 6 p.m., Celebration Center

Online Lenten worship: Wednesdays, February 24-March 24

- 5:30 p.m., [flcfargo.org](http://flcfargo.org) and Facebook

Lenten book studies:

During Lent we are reading Barbara Brown Taylor's book *Learning to Walk in the Dark*. Register for a book study at [flcfargo.org](http://flcfargo.org) or at the church office.

In-person Adult Book Study:

- Tuesdays, 11 a.m., Fellowship Hall
- Tuesdays, 7 p.m., Fellowship Hall

Online Women's Book Study:

- Tuesdays, 1:30 p.m., Zoom meeting
- Thursdays, 7 p.m., Zoom meeting

Kids' Movie Night Out—Parents Date Night

Friday, March 12, drop-off 5:30-6 p.m., pick-up 8 p.m.

For kids grades 1-4

Featured movie: Disney/Pixar's Monsters Inc.

Bring your own pillow/blanket. Popcorn and pizza treats served!

**CHURCH OFFICE: 701.235.7389, [info@flcfargo.org](mailto:info@flcfargo.org)**

**OFFICE HOURS / WELCOME DESK:**

**MON, TUES, WEDS, THURS 8 a.m.—5 p.m.**

**FRI: 8 a.m.—12 p.m.**

**SUN 8:30 a.m.—12 p.m.**

**Wi-Fi: FLCGuest, password: FirstLutheran619**

## CELEBRATEPRAYER

We as God's people believe in the power of prayer. Please pray for the following who have asked to be prayed for publicly:

*Brenda Cummins, Amy Carey, Jim Frisk, Gail Zimprich, Julie Anderson, Janice Ames, Pam Burley, Dan and Janna Westerholm, Marilyn Parker, Betty Wilson, Liz Gibb, Annette Ward-Reddick, Barb Orvedal, LaVern Hoganson, Roger Hansen, Marlene Young, Wes Briggs, Sean Overdahl, Doug Aseby, and George.*

The sympathy and prayers of First Lutheran are offered to the family and friends of **Nancy Erickson**, mother of Jennifer Dahl and Allan Erickson; and **William Sell**.

## RADIO

The radio broadcast today is given in memory of **John and Berniece Lavik**, from Bev and Al Nielsen.

## CHRISTIANEDUCATION

Kids are an important part of FLC! In-person classes will resume in Fall 2021. Online classes and at home resources will continue through the school year.

Nursery (0-5 yrs): Closed until further notice (COVID precaution)

Kids at First (age 3-4th grade): FLOCK Magazine and FLOCK online resources

56ers (5-6th grade): on break during Lent (kids are encouraged to attend worship with their family)

Servant Leadership Academy/Confirmation

(7-8th grade): online Zoom, Wednesdays, 7 p.m.

Youth Group (9-12th grade): Wednesdays, 8 p.m., Great Hall

## YOURMINISTRYTEAM

<b>Pr. Corey Bjertness</b>	<a href="mailto:cbjertness@flcfargo.org">cbjertness@flcfargo.org</a>
<b>Pr. Laurie Neill</b>	<a href="mailto:lnNeill@flcfargo.org">lnNeill@flcfargo.org</a>
<b>Pr. Stephanie Tollefson</b>	<a href="mailto:stollefson@flcfargo.org">stollefson@flcfargo.org</a>
<b>Pr. Marty Tollefson</b>	<a href="mailto:mtollefson@flcfargo.org">mtollefson@flcfargo.org</a>
<b>Rollie Johnson</b>	<a href="mailto:rjohnson@flcfargo.org">rjohnson@flcfargo.org</a>
<b>Shelly Erickson</b>	<a href="mailto:serickson@flcfargo.org">serickson@flcfargo.org</a>
<b>Erik Carlson</b>	<a href="mailto:ecarlson@flcfargo.org">ecarlson@flcfargo.org</a>
<b>Marlee Robertson</b>	<a href="mailto:mrobertson@flcfargo.org">mrobertson@flcfargo.org</a>
<b>Polly Kloster</b>	<a href="mailto:pkloster@flcfargo.org">pkloster@flcfargo.org</a>

View the entire staff online at [www.flcfargo.org](http://www.flcfargo.org)

Council Officers:

Sindy Keller, President	701.238.2088
Gary Haugo, Vice President	701.261.5172
Tracy Farmer, Treasurer	701.356.0324
Chris Kraemer, Secretary	701.371.5718
Gary Inman, Past Chair	701.371.1563

## THISWEEK

### Sunday, March 7—Communion Sunday

- 9 a.m. **In-Person Traditional Worship**, Sanctuary
- 9 a.m. **Traditional Worship Online & Radio**
- 9 a.m. **In-Person Contemporary Worship**, Celebration Center
- 10 a.m. **Coffee Fellowship**, The Great Hall
- 10:30 a.m. **In-Person Contemporary Worship**, Celebration Center
- 10:30 a.m. **Contemporary Worship Online**
- 12:30 p.m. **Open Doors For All Nations Worship**, CrossTalk Café

### Monday, March 8

- 9 a.m. **Quilters Ministry**, Fellowship Hall
- 1 p.m. **Staff Meeting**, Adult Ed Room

### Tuesday, March 9

- 7 a.m. **Men's Bible Study**, Fellowship Hall
- 9 a.m. **MomTalk Steering Meeting**, The Great Hall
- 11 a.m. **Adult Lenten Bible Study**, Fellowship Hall
- 1:30 p.m. **Knit and Crochet Group**, Bethany on 42nd
- 1:30 p.m. **Online Women's Lenten Study**, Zoom meeting
- 6 p.m. **Tae Kwon Do**, Gym
- 7 p.m. **Adult Lenten Bible Study**, Fellowship Hall

### Wednesday, March 10

- 12:45 p.m. **Organ Recital by Michael Olson**, Sanctuary
- 1:30 p.m. **Wednesday Fellowship**, Sanctuary/Great Hall
- 5:30 p.m. **Online Lenten Worship**
- 5:30 p.m. **In-Person Lenten Worship**, Sanctuary
- 6 p.m. **In-Person Lenten Worship**, Celebration Center
- 6:30 p.m. **Vocal Ensemble Rehearsal**, Sanctuary/Celebration Station
- 7 p.m. **Online Confirmation/SLA Class**, Zoom meeting
- 8 p.m. **High School Youth Group**, The Great Hall

### Thursday, March 11

- 7 a.m. **Online Global Missions Meeting**, Zoom meeting
- 8:15 a.m. **Quilters Ministry**, Fellowship Hall
- 6 p.m. **Face-to-Face Online Worship**
- 7 p.m. **Online Women's Lenten Study**, Zoom meeting

### Friday, March 12

- 12 p.m. **Church/Church Office Closed**
- 5:30 p.m. **Kids Movie Night**, The Great Hall

### Saturday, March 13

No scheduled activities

### Sunday, March 14—Daylight Saving Time Begins

- 9 a.m. **In-Person Traditional Worship**, Sanctuary
- 9 a.m. **Traditional Worship Online & Radio**
- 9 a.m. **In-Person Contemporary Worship**, Celebration Center
- 10 a.m. **Coffee Fellowship**, The Great Hall
- 10:30 a.m. **In-Person Contemporary Worship**, Celebration Center
- 10:30 a.m. **Contemporary Worship Online**
- 12:30 p.m. **Open Doors For All Nations Worship**, CrossTalk Café
- 12:30 p.m. **Open Doors For All Nations Worship**, CrossTalk Café

## BROADCASTMINISTRY

- **Online:** Sundays 9 & 10:30 a.m., flcfargo.org and Facebook.
- **Radio:** Sundays 9 a.m., 970 AM and 93.1 FM.
- **TV:** Fargo: Sundays 1:30 p.m., Tuesdays 6:30 p.m. (channels Midco 68, Sparklight 1068); Moorhead: Sundays 5 p.m., Tuesdays 7 p.m. (channels Midco 99, Sparklight 69).

## NEXTWEEK'S SCRIPTURE

Sunday, March 14:

- Sanctuary: John 8:1-11
- Celebration: John 6:1-15

## SUPPORT FIRST LUTHERAN MINISTRIES:



**ONLINE GIVING:** [www.flcfargo.org](http://www.flcfargo.org) (from the Quick Links banner select "Donate Now")



**TEXT TO GIVE:** Text 701.354.1495 with the dollar amount you would like to give



**MAIL A CHECK:** 619 Broadway, Fargo, ND 58102