

20 | SUNDAY, MARCH 21 | 21
JOHN 10:1-18

LIVE
LOVE
LEAD
like Jesus

ON BROADWAY



FIRST LUTHERAN CHURCH
INSPIRE. EQUIP. REACH.

*let your
light
shine*

MATT. 6:18



619 BROADWAY, FARGO ND | 701.235.7389 | WWW.FLCFARGO.ORG |

FIRST LUTHERAN CHURCH

INSPIRE. EQUIP. REACH.

WELCOME! If you sailed into church this morning on the tides of triumph or if you crawled in under the crushing blows of defeat... **WELCOME.** We are just glad you are here.

Please make yourself at home and let us know if there is anything you need. This bulletin will help you navigate worship at First Lutheran and opportunities to serve and connect with our faith community.



WHAT ARE WE ABOUT?

We want to make Jesus famous. It is as simple as that. Our purpose in gathering here today is to make Jesus known and to know him better. Because if this isn't about Jesus, it isn't worth doing.



COMMUNION The sacrament of Communion is celebrated at all services the first and third Sundays of each month; and at all Wednesday services during Lent. All are welcome to participate in this act of worship

and remembrance. Children who do not receive communion are welcome to come forward for a blessing.

WORSHIP We believe that all instruments, all voices and all people should praise the Lord. We do not worship a "style," we worship Jesus.



Traditional Worship follows a liturgy and the music centers around the organ and piano. The order of worship is inserted into the bulletin. [9 a.m. Sundays; 1:30 p.m. Wednesdays in the Sanctuary on the north end of the church.]



CONNECTING We would love to get to know you better. Peruse our website for ways to connect through service, study, or community-building events. Fill out the blue post-it so we can keep in touch.



Celebration Worship uses a praise band and the order of worship and song lyrics are projected on the wall. [9 & 10:30 a.m. Sundays in the Celebration Center on the west end of the church]



OFFERING We give tithes and offerings as an act of worship, obedience, and thanksgiving. *If you are a guest, you are not expected or obligated to give.*



BELONGING Each quarter, we host a new member BELONG class to introduce and welcome new members to First Lutheran. The next class is planned for this spring (date TBD). Contact the church office for details.

March 21, 2021
Live, Love, and Lead Like Jesus

WORSHIP PARTICIPANTS

Message	Pastor Marty Tollefson
Assisting Pastor	Pastor Corey Bjertness
Music Minister	Michael Olson
Cantor	David Ferreira

PRELUDE:

Lamb of God, Most Holy – J.S. Bach
Michael Olson, organist

Today's prelude and postlude are being played to commemorate J.S. Bach on his birthday -- March 21, 1685.

WELCOME and ANNOUNCEMENTS

PRAYER OF INVOCATION

CONFESSION & FORGIVENESS: *(please stand as you are able)*

P: Blessed be the holy Trinity, † one God,
who shines in glory, clothes us in compassion,
and bears gifts of mercy for all.

C: Amen.

P: Let us confess our sins with confidence in God's promise of forgiveness.

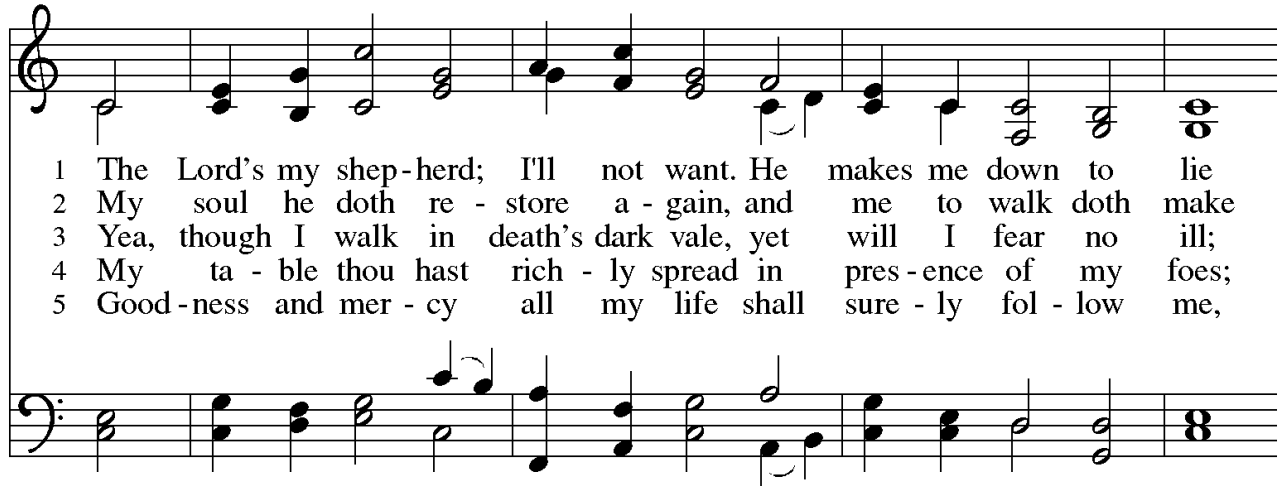
(Silence for reflection)

P: God, wonderful counselor,

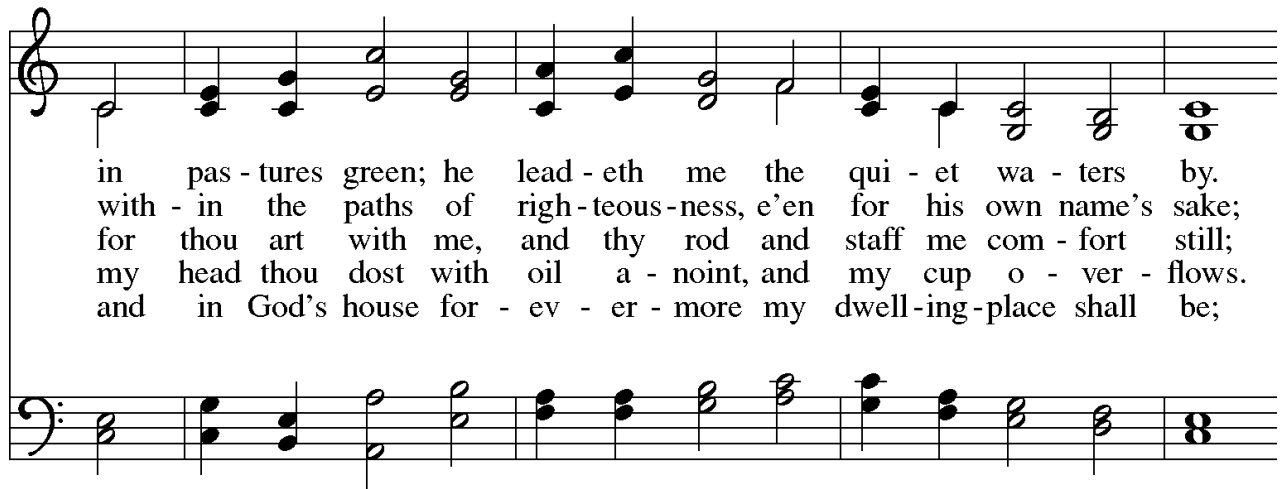
**C: we confess that we have turned from your gifts and chosen our own way.
We have not made room for you in our hearts or in our world.
We have lived in fear; we have not welcomed the stranger;
we desire gifts that will not endure.
Forgive us our sins, known and unknown,
and open us to receive the peace of Jesus
dwelling in and among us. Amen.**

P: God's lovingkindness has appeared to us in Christ our Savior.
We are saved, not by anything we have done, but by God's mercy poured out on us richly.
In the name of † Jesus Christ, your sins are forgiven.
Through the Spirit living in you, God give you faith to trust Jesus,
who is Love born for you, now and always.

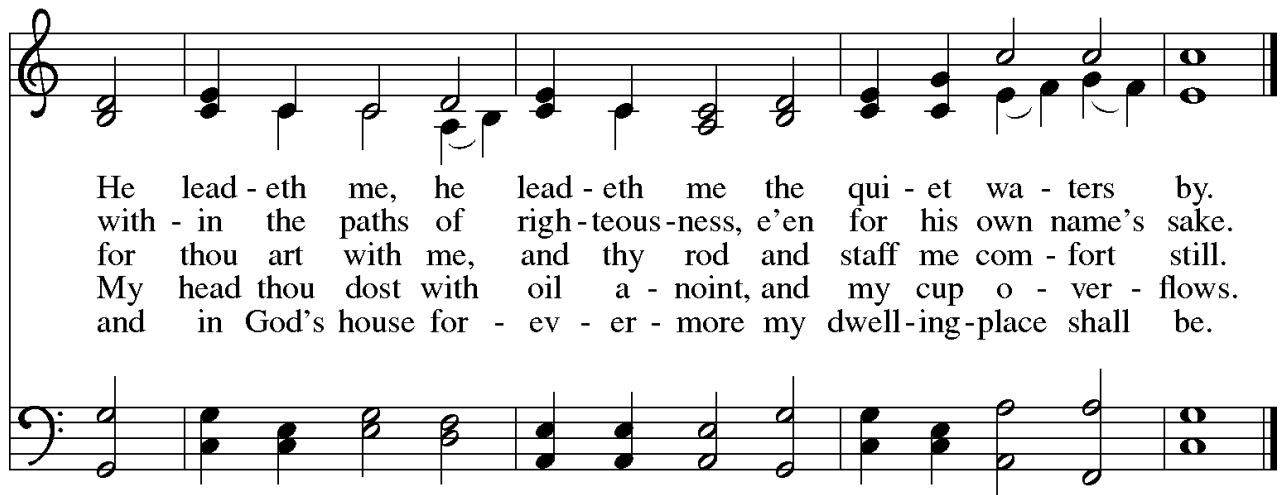
C: Amen.



1 The Lord's my shep-herd; I'll not want. He makes me down to lie
 2 My soul he doth re - store a - gain, and me to walk doth make
 3 Yea, though I walk in death's dark vale, yet will I fear no ill;
 4 My ta - ble thou hast rich - ly spread in pres - ence of my foes;
 5 Good - ness and mer - cy all my life shall sure - ly fol - low me,



in pas - tures green; he lead - eth me the qui - et wa - ters by.
 with - in the paths of righ - teous - ness, e'en for his own name's sake;
 for thou art with me, and thy rod and staff me com - fort still;
 my head thou dost with oil a - noint, and my cup o - ver - flows.
 and in God's house for - ev - er - more my dwell - ing - place shall be;



He lead - eth me, he lead - eth me the qui - et wa - ters by.
 with - in the paths of righ - teous - ness, e'en for his own name's sake.
 for thou art with me, and thy rod and staff me com - fort still.
 My head thou dost with oil a - noint, and my cup o - ver - flows.
 and in God's house for - ev - er - more my dwell - ing - place shall be.

(please be seated)

VOCAL ENSEMBLE:

Sheep May Safely Graze – J.S. Bach
Kathy Ferreira, Kate Moe, David Ferreira
Michael Olson, accompanist

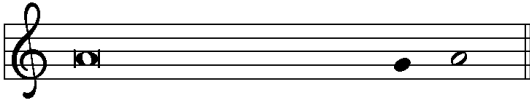
GREETING:

- P: The grace of our Lord Jesus Christ, the love of God,
and the communion of the Holy Spirit be with you all.
C: **And also with you.**

(continued on next page)

*Order of worship printed from Sundays and Seasons.com. Copyright 2015 Augsburg Fortress.
All rights reserved.
Reprinted by permission under Augsburg Fortress Liturgies Annual License # 13275-L.
Music Reprinted under OneLicense.net #721505*

KYRIE:



In peace, let us pray to the Lord.



Lord, have mer - cy.



For the peace from a-bove, and for our sal - vation, let us pray to the Lord.



Lord, have mer - cy.



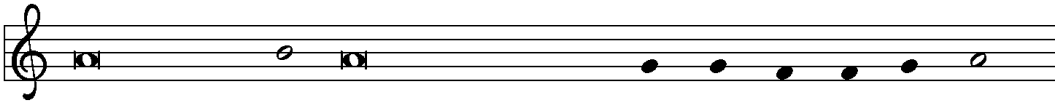
For the peace of the whole world, for the well-being of the church of God,



and for the unity of all, let us pray to the Lord.



Lord, have mer - cy.



For this holy house, and for all who offer here their wor-ship and praise,



let us pray to the Lord. Lord have mer - cy.



Help, save, comfort, and de - fend us, gra-cious Lord. A - men.

1 Lord Je - sus, think on me, and purge a - way my sin;
 2 Lord Je - sus, think on me, by anx - ious thoughts op - pressed;
 3 Lord Je - sus, think on me, nor let me go a - stray;
 4 Lord Je - sus, think on me, that, when the flood is past,

from self - ish pas - sions set me free and make me pure with - in.
 let me your lov - ing ser - vant be and taste your prom - ised rest.
 through dark - ness and per - plex - i - ty point out your cho - sen way.
 I may the e - ter - nal bright - ness see and share your joy at last.

PRAYER OF THE DAY:

P: Let us pray.

C: O God our shepherd, you know your sheep by name and lead us to safety through the valleys of death. Guide us by your voice, that we may walk in certainty and security to the joyous feast prepared in your house, through Jesus Christ, our Savior and Lord, who lives and reigns with you and the Holy Spirit, one God, now and forever. Amen.

THE HOLY GOSPEL: John 10:1-18

MESSAGE: Pastor Marty Tollefson

Refrain
All

Shep-herd me, O God, be - yond my wants, be - yond my fears, from

death in - to life. life.

Leader or All

1 God is my shep-herd, so noth - ing shall I want, I
 2 Gent - ly you raise me and heal my wea - ry soul, you
 3 Though I should wan - der the val - ley of death, I

rest in the mead-ows of faith - ful - ness and love, I
 lead me by path - ways of righ - teous - ness and truth, my
 fear no e - vil, for you are at my side, your

walk by the qui - et wa - ters of peace.
 spir - it shall sing the mu - sic of your name.
 rod and your staff, my com - fort and my hope.

Refrain

(hymn continued next page)

Leader or All

4 You have set me a ban-quet of love in the face of

ha-tred, crown-ing me with love be-yond my pow'r to hold. *Refrain*

Leader or All

5 Sure-ly your kind-ness and mer-cy fol-low me all the days of my life;

I will dwell in the house of my God for-ev - er - more.

Final refrain
All

Shep-herd me, O God, be - yond my wants, be -


yond my fears, from death in - to life.

OFFERING:

OFFERING OPTIONS

Thank you for your new or continued generosity towards God's mission at First Lutheran Church. In-person offerings may be dropped in the offering baskets at the entry/exit. Offerings can also be mailed to the church office and we encourage you to use our online giving and texting options.

Online Giving is an easy and convenient way to "set it and forget it."

 **ONLINE GIVING:** www.flcfargo.org (from the Quick Links banner select "Donate Now")

 **TEXT TO GIVE:** Text 701.354.1495 with the dollar amount you would like to give

 **MAIL A CHECK:** 619 Broadway, Fargo, ND 58102

APOSTLES' CREED: *(please stand as you are able)*

I believe in God, the Father almighty, creator of heaven and earth.

I believe in Jesus Christ, his only Son, our Lord.

He was conceived by the power of the Holy Spirit, and born of the virgin Mary.

He suffered under Pontius Pilate, was crucified, died, and was buried. He descended into hell. On the third day he rose again. He ascended into heaven, and is seated at the right hand of the Father. He will come again to judge the living and the dead.

I believe in the Holy Spirit, the holy catholic Church, the communion of saints, the forgiveness of sins, the resurrection of the body, and the life everlasting. Amen.

(please be seated)

PRAYERS FOR GOD'S PEOPLE

WORDS OF PROMISE

LORD'S PRAYER: *(spoken by the congregation)*

Our Father, who art in heaven,
hallowed be thy name,
thy kingdom come,
thy will be done,
 on earth as it is in heaven.

Give us this day our daily bread;
and forgive us our trespasses,
as we forgive those
 who trespass against us;
and lead us not into temptation,
but deliver us from evil.

For thine is the kingdom,
and the power, and the glory,
forever and ever. Amen.

COMMUNION SPECIAL MUSIC:

The King of Love My Shepherd Is -- Harry Rowe Shelley
Kathy and David Ferreira, vocal duet; Michael Olson, accompanist



1 Sav - ior like a shep-herd lead us; much we need your ten - der care.
2 We are yours; in love be - friend us, be the guard-ian of our way;
3 You have prom-ised to re - ceive us, poor and sin - ful though we be;
4 Ear - ly let us seek your fa - vor, ear - ly let us do your will;



In your pleas-ant pas-tures feed us, for our use your fold pre-pare.
keep your flock, from sin de - fend us, seek us when we go a - stray.
you have mer - cy to re - lieve us, grace to cleanse, and pow'r to free.
bless - ed Lord and on - ly Sav - ior, with your love our spir - its fill.



Bless-ed Je - sus, bless-ed Je - sus, you have bought us; we are yours.
Bless-ed Je - sus, bless-ed Je - sus, hear us chil - dren when we pray.
Bless-ed Je - sus, bless-ed Je - sus, ear - ly let us turn to you.
Bless-ed Je - sus, bless-ed Je - sus, you have loved us, love us still.



Bless-ed Je - sus, bless-ed Je - sus, you have bought us; we are yours.
Bless-ed Je - sus, bless-ed Je - sus, hear us chil - dren when we pray.
Bless-ed Je - sus, bless-ed Je - sus, ear - ly let us turn to you.
Bless-ed Je - sus, bless-ed Je - sus, you have loved us, love us still.




POST-COMMUNION BLESSING

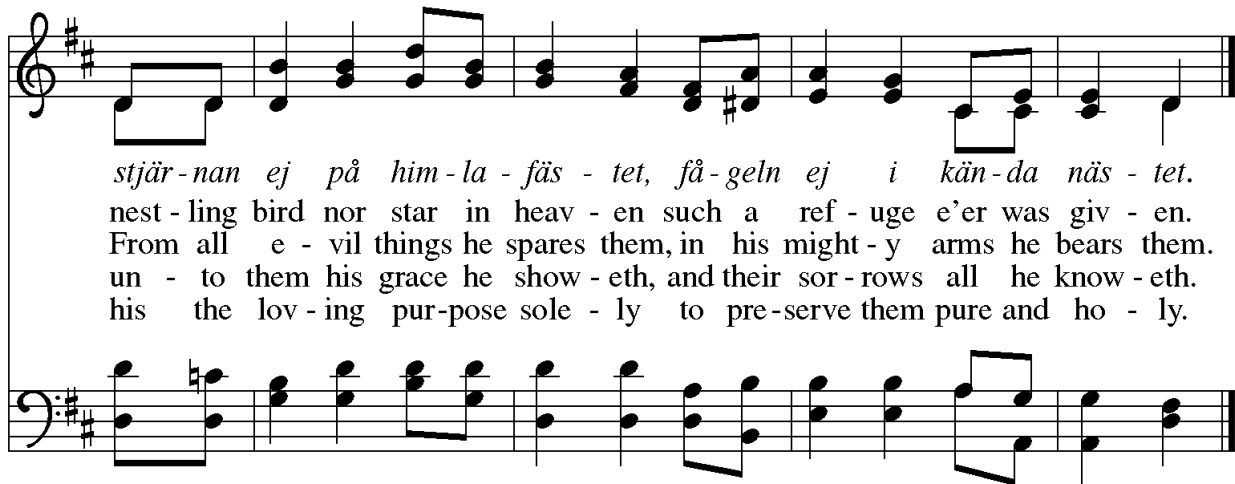
BENEDICTION & THREEFOLD AMEN (please stand as you are able)

SENDING HYMN: *Children of the Heavenly Father*

(ELW 781)



Tryg - ga - re kan ing - en va - ra än Guds lil - la bar - na - ska - ra,
1 Chil - dren of the heav'n-ly Fa - ther safe - ly in his bo - som gath - er;
2 God his own doth tend and nour-ish, in his ho - ly courts they flour-ish.
3 Nei - ther life nor death shall ev - er from the Lord his chil - dren sev - er;
4 Though he giv - eth or he tak-eth, God his chil-dren ne'er for - sak - eth;



stjär - nan ej på him - la - fäs - tet, få - geln ej i kän - da näs - tet.
nest - ling bird nor star in heav - en such a ref - uge e'er was giv - en.
From all e - vil things he spares them, in his might - y arms he bears them.
un - to them his grace he show - eth, and their sor - rows all he know - eth.
his the lov - ing pur - pose sole - ly to pre - serve them pure and ho - ly.

POSTLUDE:

Arioso - J.S. Bach
Michael Olson, organist



FIRST
LUTHERAN
CHURCH

Easter

2021
he is risen

7 a.m. - Sanctuary, in-person

8:30 a.m. - Sanctuary, in-person

9 a.m. - Celebration Center, in-person

9 a.m. - *online streaming*

9 a.m. - *Radio: 970AM/93.7FM*

9:30 a.m. - Great Hall, in-person**

10 a.m. - Sanctuary, in-person

10:30 a.m. - Celebration Center, in-person

10:30 a.m. - *online streaming*

11 a.m. - Great Hall, in-person**

11:30 a.m. - TV: KXJB (CBS/channel 30)

**Family-focused service (kids' message)

Online: flcfargo.org and Facebook

Communion served at all services

Easter Note: Due to COVID19, capacity is restricted in each worship space to 250 people (200 in Great Hall). If the service you plan to attend fills to capacity, please attend the following service 30 minutes later.



FIRST LUTHERAN CHURCH
INSPIRE. EQUIP. REACH.



Congregational Survey

Your input is important!

We invite you to participate in a congregational assessment for First Lutheran. A link to the online survey will be emailed to you and your family. The survey link will be open for your response between **March 5-28**. All responses will be anonymous.

If you do not receive the email, send a message to info@flcfargo.org.

If you'd prefer a paper copy, it is available upon request at the front desk.

God Bless

NEWS&EVENTS

Visit our website for more detailed information and to register: www.flcfargo.org.

Lent 2021: Learning to Walk in the Dark

This Lenten season, we will be learning what it means to walk in the dark. Join us through worship, book study, and other events to explore the mysteries of darkness.

In-person worship: Wednesdays, February 24-March 24

- 1:30 p.m., Wednesday Fellowship, Sanctuary
- 5:30 p.m., Sanctuary
- 6 p.m., Celebration Center

Online Lenten worship: Wednesdays, February 24-March 24

- 5:30 p.m., flcfargo.org and Facebook

Mission Soup To-Go (take-out only)

Sunday, March 21, 10 a.m.-noon, The Great Hall

Following worship, grab soup to-go to nourish your soul! Drive-up available at the main entrance too. Varieties include chili, bean and ham, gumbo, tomato basil, and squash.

Upcoming Family Life Faith Milestones

Fifth Grade First Communion

- Communion Instruction: Sunday, March 28, 3-5 p.m., Celebration Center
- First Communion Worship: Thursday, April 1, 6 p.m., Celebration Center

Confirmation (make-up from October 2020 postponement)

- Sunday, April 11, 1 p.m., Celebration Center

RSVP to Emily Halver, ehalver@flcfargo.org. Immediate family members only for in-person attendance due to capacity restrictions. Live-streaming will be offered on flcfargo.org.

Helping Hands Men's Group Resumes

Tuesdays, 8 a.m., Fellowship Hall—beginning March 16

All men are invited to gather for coffee fellowship (coffee and donuts/pastries) on Tuesday mornings. And Dalen may have an easy project to help with too. Questions?: contact Pastor Marty, mtollefson@flcfargo.org.

CHURCH OFFICE: 701.235.7389, info@flcfargo.org

OFFICE HOURS / WELCOME DESK:

MON, TUES, WEDS, THURS 8 a.m.—5 p.m.

FRI: 8 a.m.—12 p.m.

SUN 8:30 a.m.—12 p.m.

Wi-Fi: FLCGuest, password: FirstLutheran619

CELEBRATEPRAYER

We as God's people believe in the power of prayer. Please pray for the following who have asked to be prayed for publicly: *Brenda Cummins, Amy Carey, Gail Zimprich, Julie Anderson, Janice Ames, Pam Burley, Dan and Janna Westerholm, Marilyn Parker, Betty Wilson, Liz Gibb, LaVern Hoganson, Roger Hansen, Marlene Young, Wes Briggs, Shawn Orvedal, Doug Aseby, Wayne Lebeda, and George.*

The sympathy and prayers of First Lutheran are offered to the family and friends of **Merna Hilde**, mother of Patricia Hilde; and **Jim Frisk**, husband of Julie Frisk, father of Laurie Corliss, Matt Frisk, and Daniel Frisk.

RADIO&FLOWERS

Today's radio broadcast and altar flowers are given in honor of the birthdays of **Audrey Hahn** (2/28), **LaVern Hoganson** (3/9), and **Phyllis Peoples** (3/14), from friends.

CHRISTIANEDUCATION

Kids are an important part of FLC! In-person classes will resume in Fall 2021. Online classes and at home resources will continue through the school year.

Nursery (0-5 yrs): Closed until further notice (COVID precaution)

Kids at First (age 3-4th grade): FLOCK Magazine and FLOCK online resources

56ers (5-6th grade): on break during Lent (kids are encouraged to attend worship with their family)

Servant Leadership Academy/Confirmation

(7-8th grade): online Zoom, Wednesdays, 7 p.m.

Youth Group (9-12th grade): Wednesdays, 8 p.m., Great Hall

YOURMINISTRYTEAM

Pr. Corey Bjertness	cbjertness@flcfargo.org
Pr. Laurie Neill	lnNeill@flcfargo.org
Pr. Stephanie Tollefson	stollefson@flcfargo.org
Pr. Marty Tollefson	mtollefson@flcfargo.org
Rollie Johnson	rjohnson@flcfargo.org
Shelly Erickson	serickson@flcfargo.org
Erik Carlson	ecarlson@flcfargo.org
Marlee Robertson	mrobertson@flcfargo.org
Polly Kloster	pkloster@flcfargo.org

View the entire staff online at www.flcfargo.org

Council Officers:

Sindy Keller, President	701.238.2088
Gary Haugo, Vice President	701.261.5172
Tracy Farmer, Treasurer	701.356.0324
Chris Kraemer, Secretary	701.371.5718
Gary Inman, Past Chair	701.371.1563

THISWEEK

Sunday, March 21—Communion Sunday

- 9 a.m. **In-Person Traditional Worship**, Sanctuary
- 9 a.m. **Traditional Worship Online & Radio**
- 9 a.m. **In-Person Contemporary Worship**, Celebration Center
- 10 a.m. **Mission Soup To-Go**, The Great Hall
- 10 a.m. **Coffee Fellowship**, The Great Hall
- 10:30 a.m. **In-Person Contemporary Worship**, Celebration Center
- 10:30 a.m. **Contemporary Worship Online**
- 12:30 p.m. **Open Doors For All Nations Worship**, CrossTalk Café

Monday, March 22

- 9 a.m. **Quilters Ministry**, Fellowship Hall
- 1 p.m. **Staff Meeting**, Adult Ed Room

Tuesday, March 23

- 7 a.m. **Men's Bible Study**, Fellowship Hall
- 8 a.m. **Helping Hands**, Fellowship Hall
- 11 a.m. **Adult Lenten Bible Study**, Fellowship Hall
- 1:30 p.m. **Knit and Crochet Group**, Bethany on 42nd
- 1:30 p.m. **Online Women's Lenten Study**, Zoom meeting
- 6 p.m. **BeFriender Meeting**, Adult Ed Room
- 6 p.m. **Tae Kwon Do**, Gym

Wednesday, March 24

- 8 a.m. **Meal Prep for Churches United**, Celebration Kitchen
- 12:45 p.m. **Organ Recital by Michael Olson**, Sanctuary
- 1:30 p.m. **Wednesday Fellowship**, Sanctuary/Great Hall
- 5:30 p.m. **Online Lenten Worship**
- 5:30 p.m. **In-Person Lenten Worship**, Sanctuary
- 6 p.m. **In-Person Lenten Worship**, Celebration Center
- 6:30 p.m. **Vocal Ensemble Rehearsal**, Sanctuary/Celebration Station
- 7 p.m. **Maah Daah Hey Hiking Trip Information Meeting**, Chapel
- 7 p.m. **SLA/Confirmation Online Zoom Classes**
- 8 p.m. **Youth Group**, The Great Hall

Thursday, March 25

- 8:15 a.m. **Quilters Ministry**, Fellowship Hall
- 12 p.m. **Foundation Board Meeting**, Adult Ed Room
- 1 p.m. **Prayer Shawl Ministry Gathering**, Fellowship Hall
- 6 p.m. **Face-to-Face Online Worship**
- 7 p.m. **Online Women's Lenten Study**, Zoom meeting

Friday, March 26

- 12 p.m. **Church/Church Office Closed**

Saturday, March 27

- 9 a.m.-4 p.m. **FMMTA Piano Competition**, Celebration Center

Sunday, March 28—Palm Sunday

- 9 a.m. **In-Person Traditional Worship**, Sanctuary
- 9 a.m. **Traditional Worship Online & Radio**
- 9 a.m. **In-Person Contemporary Worship**, Celebration Center
- 10 a.m. **Coffee Fellowship**, The Great Hall
- 10:30 a.m. **In-Person Contemporary Worship**, Celebration Center
- 10:30 a.m. **Contemporary Worship Online**
- 12:30 p.m. **Open Doors For All Nations Worship**, CrossTalk Café
- 3 p.m. **First Communion Instruction**, Celebration Center

MAAHDAAHHEY

April 21-25, Rollie is leading a group for a 4-day hiking trip in the Badlands of western North Dakota. Grow your faith hiking in fellowship with your trailmates and roam with the buffalo too!

Attend an **information meeting** on Wednesday, March 24, 7 p.m. in the Chapel to learn more. Contact Rollie with any questions, rjohnson@flcfargo.org. Register at flcfargo.org.

BROADCASTMINISTRY

- **Online:** Sundays 9 & 10:30 a.m., flcfargo.org and Facebook.
- **Radio:** Sundays 9 a.m., 970 AM and 93.1 FM.
- **TV:** Fargo: Sundays 1:30 p.m., Tuesdays 6:30 p.m. (channels Midco 68, Sparklight 1068); Moorhead: Sundays 5 p.m., Tuesdays 7 p.m. (channels Midco 99, Sparklight 69).

NEXTWEEK'S SCRIPTURE

Sunday, March 28: Palm Sunday

- Sanctuary: John 12:12-32
- Celebration: John 12:12-32

SUPPORT FIRST LUTHERAN MINISTRIES:



ONLINE GIVING: www.flcfargo.org (from the Quick Links banner select "Donate Now")



TEXT TO GIVE: Text 701.354.1495 with the dollar amount you would like to give



MAIL A CHECK: 619 Broadway, Fargo, ND 58102